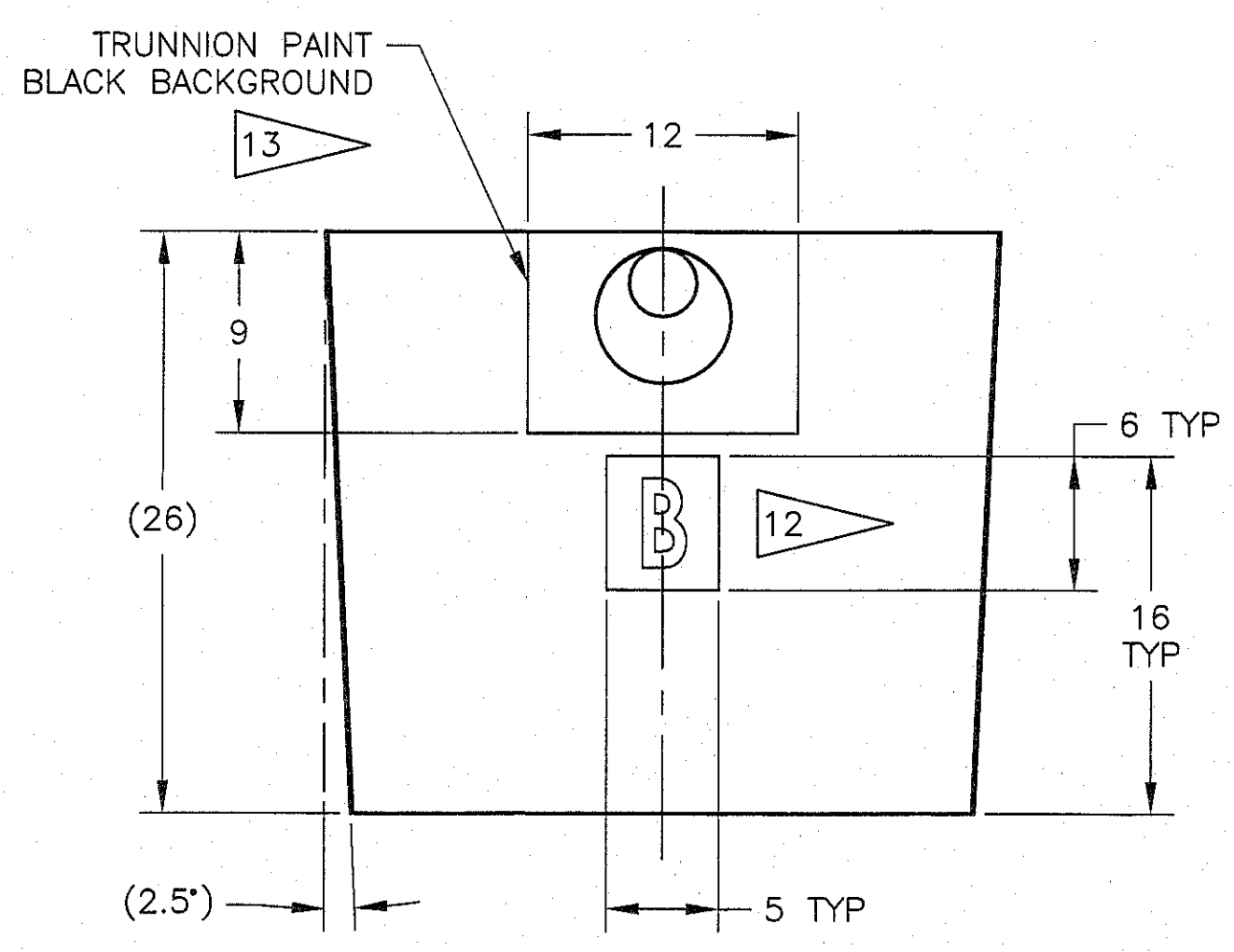
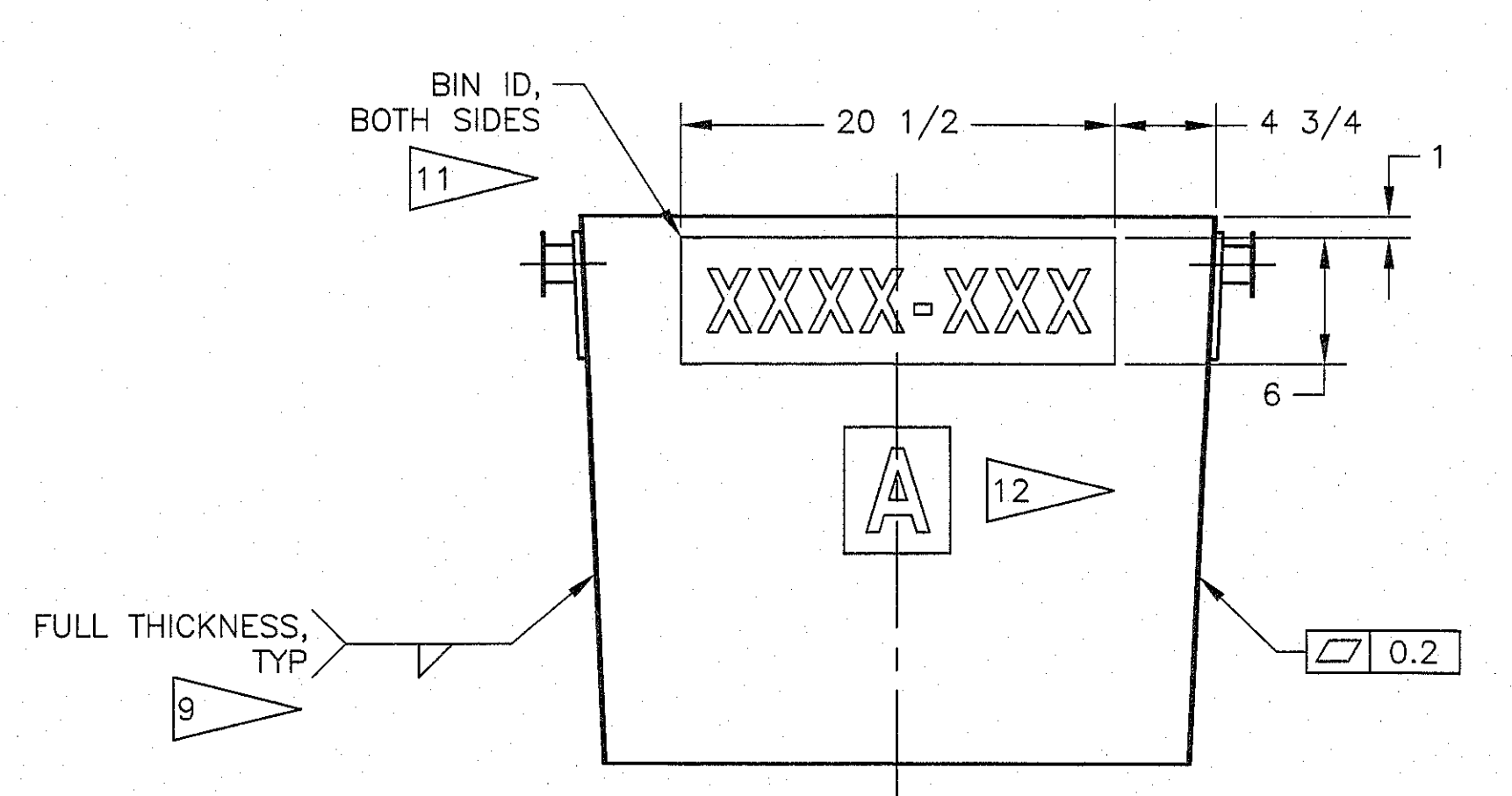
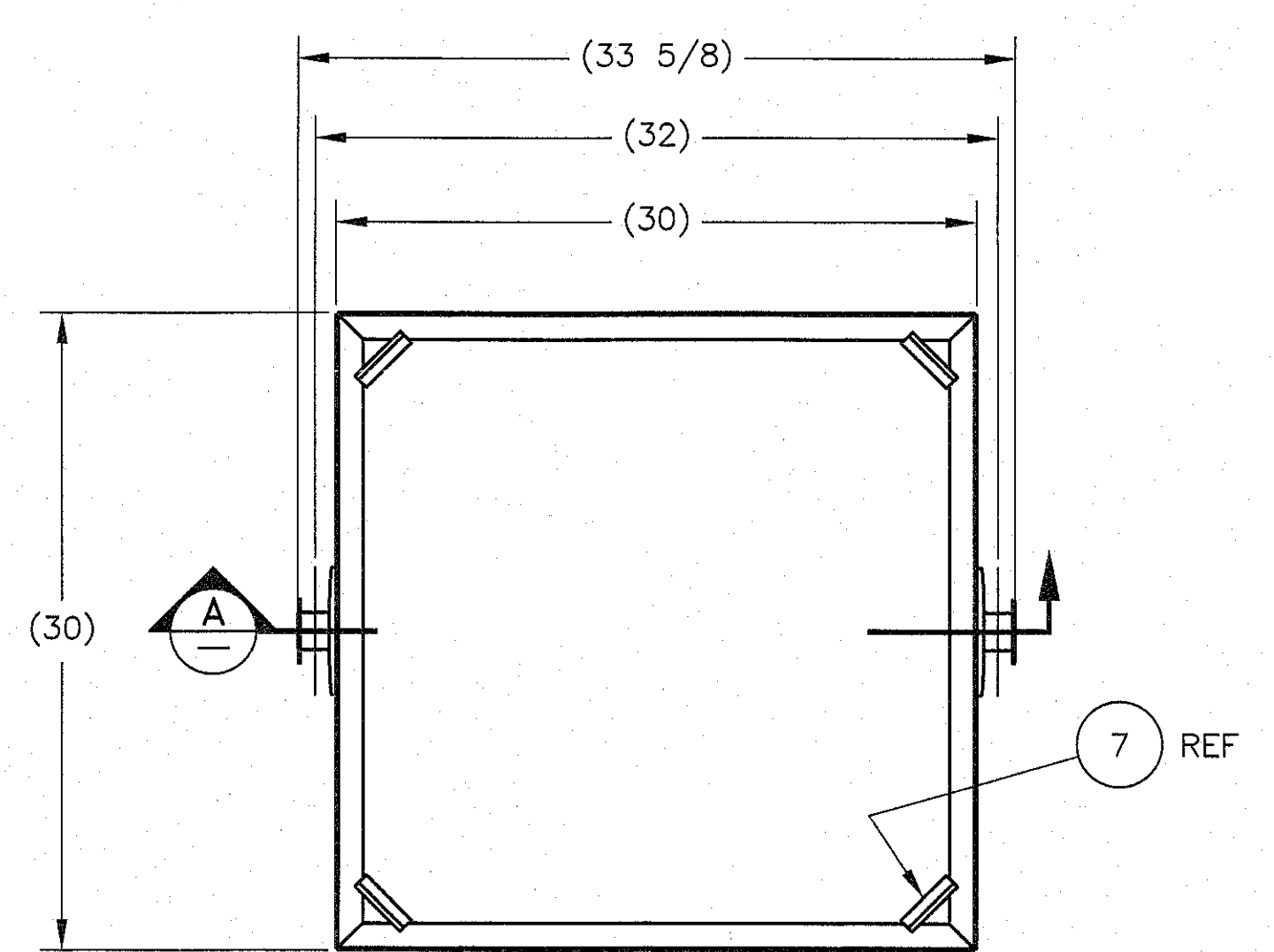


PARTS LIST/MATERIAL LIST

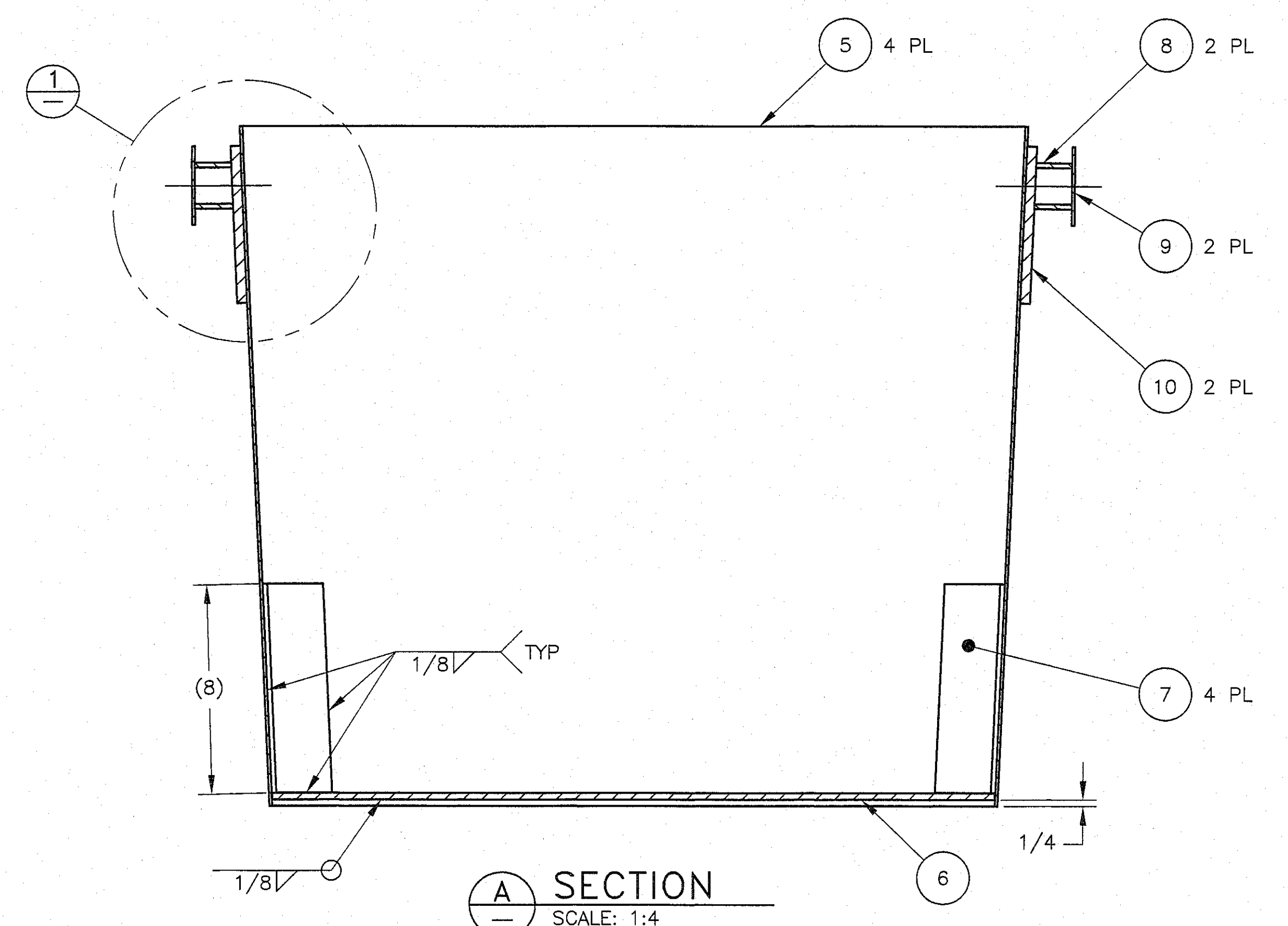
| QTY | PARTS/DASH NUMBER | NOMENCLATURE/DESCRIPTION | MATERIAL/REFERENCE | SHEET | ITEM NO |
|------|-------------------|--|--|-------|---------|
| -010 | -010 | 26 INCH WASTE BIN WELDMENT | | 1 | 1 |
| | | | | | 2 |
| | | | | | 3 |
| | | | | | 4 |
| 4 | -001 | SIDE PANEL, SHEET, 12 GA | ASTM A36 OR A1011, GR 36 OR GREATER | 2 | 5 |
| 1 | -002 | FLOOR PANEL, PLATE, 1/4" THK | ASTM A36 | 2 | 6 |
| 4 | -003 | CORNER SUPPORT, PLATE, 1/4" THK | ASTM A36 | 2 | 7 |
| 2 | -004 | TRUNNION, TUBE, ROUND, 1 3/4" OD X 0.19 WALL | ASTM A513 GRADE 1020 OR 1026, DRAWN OVER MANDREL | 2 | 8 |
| 2 | -005 | TRUNNION CAP, SHEET, 12 GA | ASTM A36 OR A1011, GR 36 OR GREATER | 2 | 9 |
| 2 | -006 | TRUNNION SUPPORT, PLATE, 3/8" THK | ASTM A36 | 2 | 10 |

GENERAL NOTES (UNLESS OTHERWISE SPECIFIED):

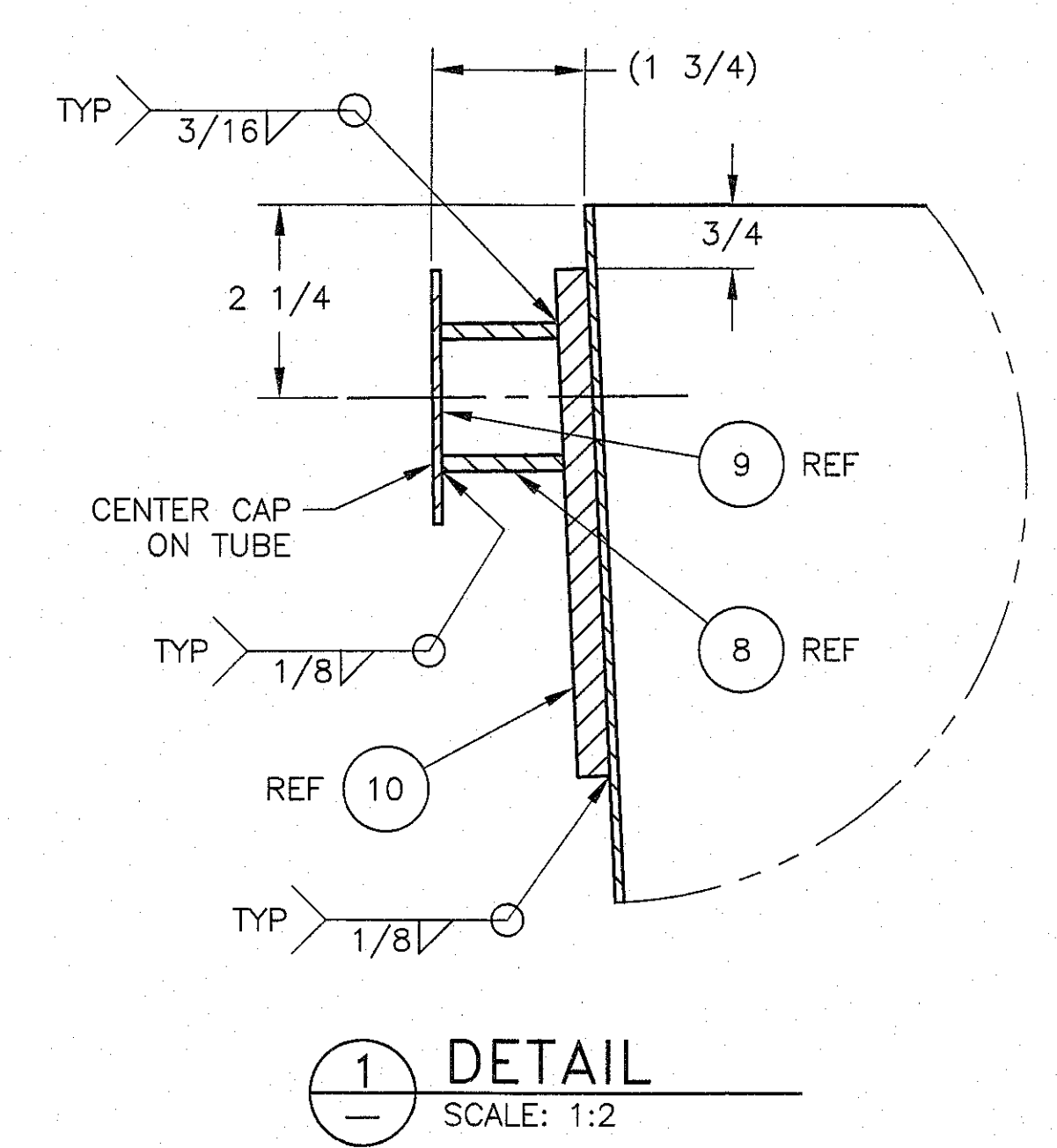
- DIMENSIONS AND TOLERANCES SHALL BE PER ASME Y14.5. ALL DIMENSIONS ARE IN INCHES, UNLESS OTHERWISE NOTED. TOLERANCES ARE AS FOLLOWS, UNLESS OTHERWISE NOTED: FRACTIONS: ±1/16, DECIMAL: .X ±0.1, .XX ±0.03, .XXX ±0.005, ANGULAR: ±1'.
- ABBREVIATIONS AND ACRONYMS SHALL BE PER H-9-006015 AND ASME Y14.38.
- BREAK ALL SHARP CORNERS AND REMOVE ALL BURRS.
- PARTS AND MATERIALS MAY BE SUBSTITUTED WITH CPCCO ENGINEERING APPROVAL.
- ALL PARTS SHALL BE GENERAL SERVICE (QL-3).
- WELD AND INSPECT IN ACCORDANCE WITH AWS D1.1. WELD PROCEDURES AND WELDER QUALIFICATIONS IN ACCORDANCE WITH ASME SECTIONS IX OR AWS D1.1 ARE ACCEPTABLE.
- 26 INCH WASTE BIN WELDMENT APPROXIMATE WEIGHT: 157 LBS. 26 INCH WASTE BIN FULLY LOADED WEIGHT: 1427 LBS.
- LOAD TEST TRUNNIONS AT 125% +0/-5% (1712 TO 1784 LBS).
- TO MINIMIZE WELDING, BIN MAY ALTERNATIVELY BE FABRICATED USING SHEET METAL FORMING.
- 26 INCH WASTE BINS SHALL BE POWDER COATED WHITE. COATING THICKNESS SHALL BE NO GREATER THAN 2 MILS.
- 26 INCH WASTE BINS SHALL BE NUMBERED WITH A UNIQUE BIN ID. THESE WILL BE SEQUENTIAL, STARTING AT WBIN-S01 FOR PRODUCTION BINS. THE NUMBERS SHALL BE 3" HIGH COMMON BLOCK TEXT, PAINTED WHITE ON A BLACK PAINTED BACKGROUND.
- 26 INCH WASTE BIN WELDMENT SIDE PANELS SHALL BE IDENTIFIED ALPHABETICALLY (A, B, C, AND D) CLOCKWISE, LOOKING TOP DOWN, STARTING WITH "A" ON A NON-TRUNNION SIDE. LETTERS SHALL BE 4" HIGH COMMON BLOCK TEXT, PAINTED WHITE ON A BLACK PAINTED BACKGROUND.
- PAINT BACKGROUND ON SIDE BLACK. PAINT TRUNNION, TRUNNION CAP, AND TRUNNION SUPPORT SAFETY YELLOW.



1 26 INCH WASTE BIN WELDMENT
SCALE: 1:8



A SECTION
SCALE: 1:4



1 DETAIL
SCALE: 1:2

Approved for Construction
ISSUED BY
DOCUMENT CONTROL
Date: 5/26/2022 AK

| | | |
|--|---|--|
| BDC. NO. 324 | CAUTION NOT COMPLETE WITHOUT CURRENT CHANGE DOCUMENTS FROM DATABASE | ATTENTION DESTROY THIS DOCUMENT BY SHREDDING MAY CONTAIN SENSITIVE INFORMATION |
| | U.S. DEPARTMENT OF ENERGY Richland Operations Office | |
| INDEX NO. 4750 | MECHANICAL 26 INCH WASTE BIN WELDMENT AND DETAILS | |
| | SIZE F | DRAWING NUMBER H-3-318642 |
| REV. NO. 0 | | REV. NO. 1 |
| DESCRIPTION RELEASED PER DCN-SRP-206. | | REVISIONS |

| DWG NUMBER | TITLE | REF NUMBER | TITLE |
|---------------------------|-------|--------------|-------|
| | | | |
| DRAWING TRACEABILITY LIST | | NEXT USED ON | |
| | | | |

8 7 6 5 4 3 2 1

F

E

D

C

B

A

8 7 6 5 4 3 2 1

F

E

D

C

B

A