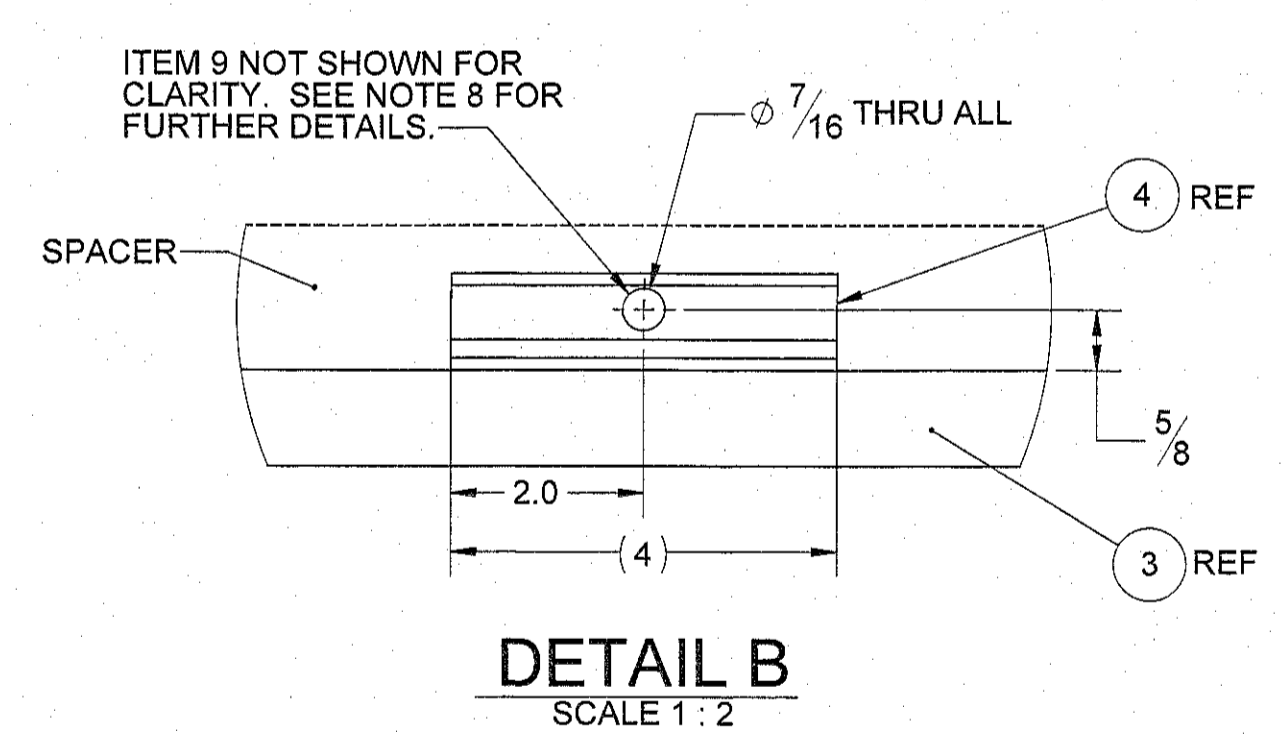
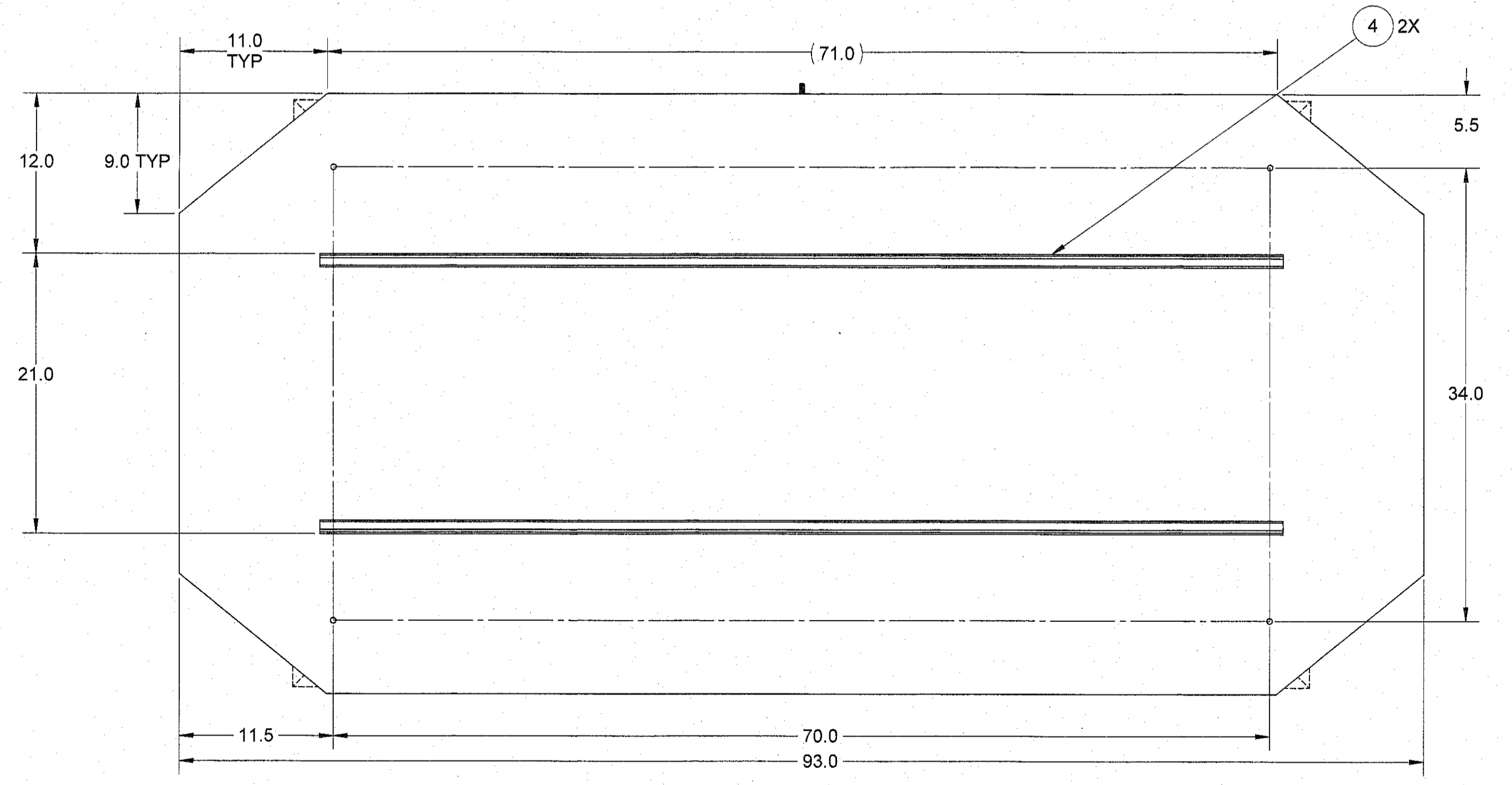
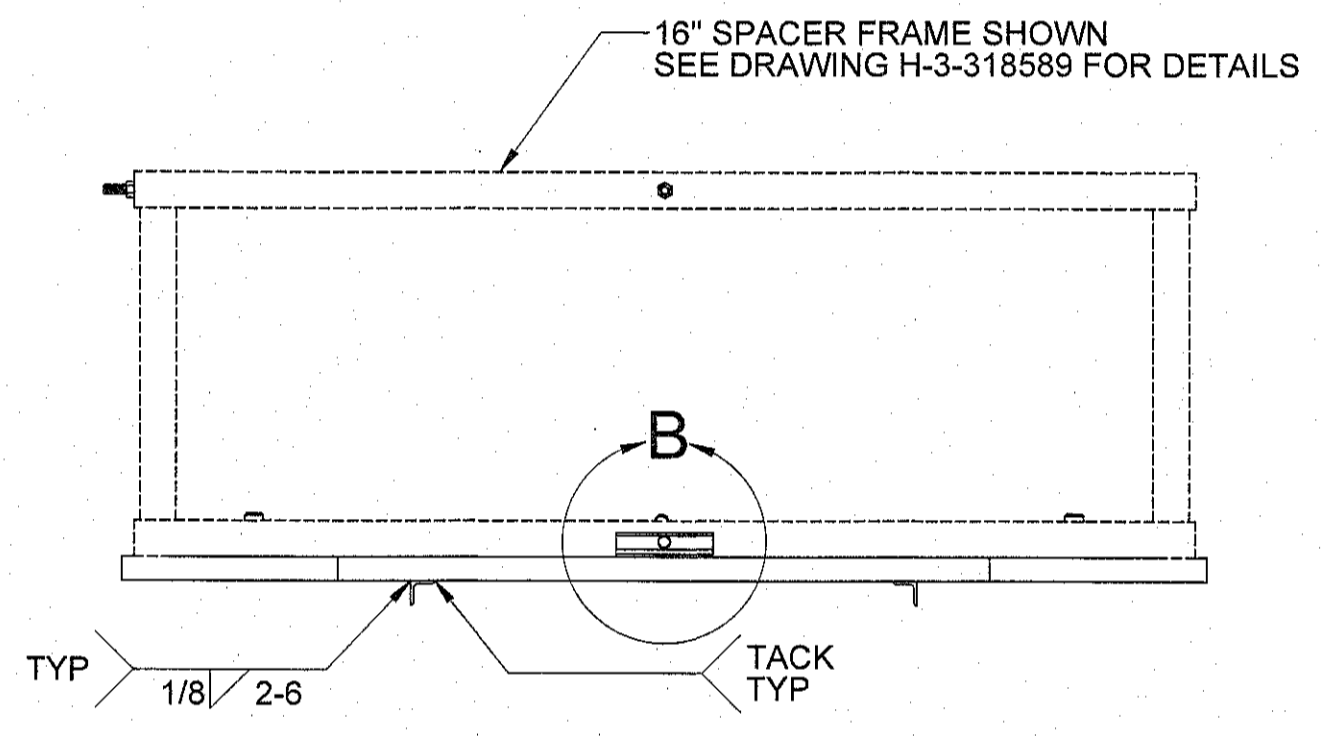
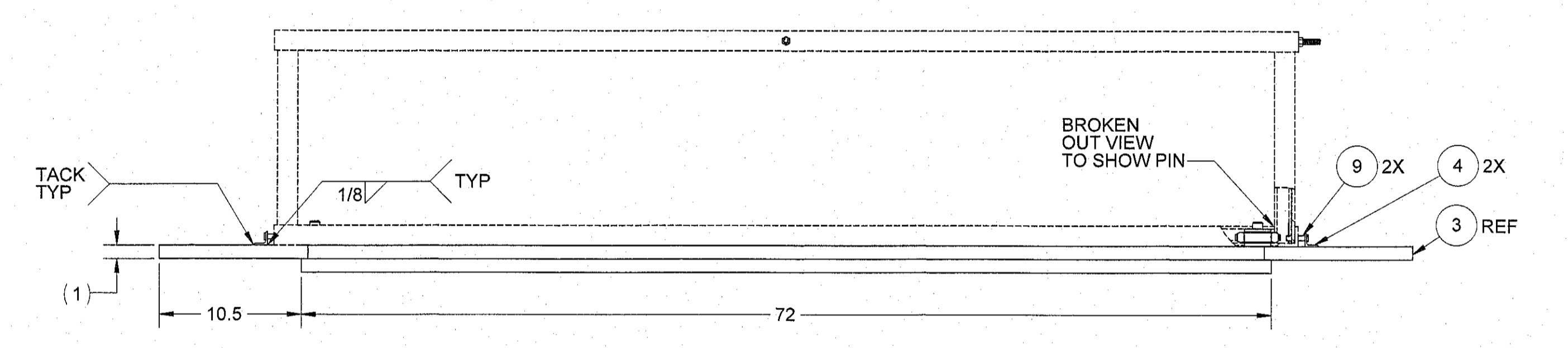
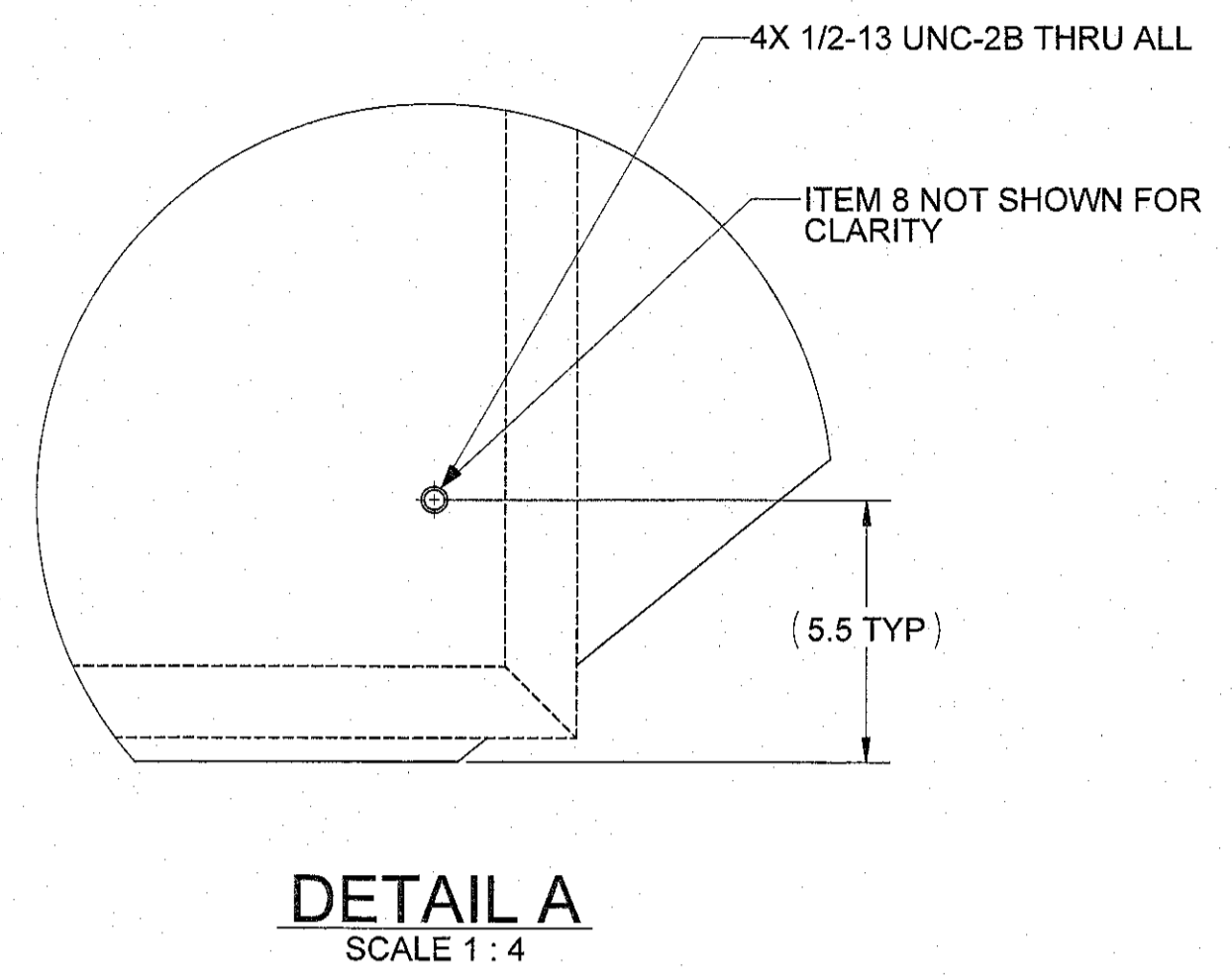
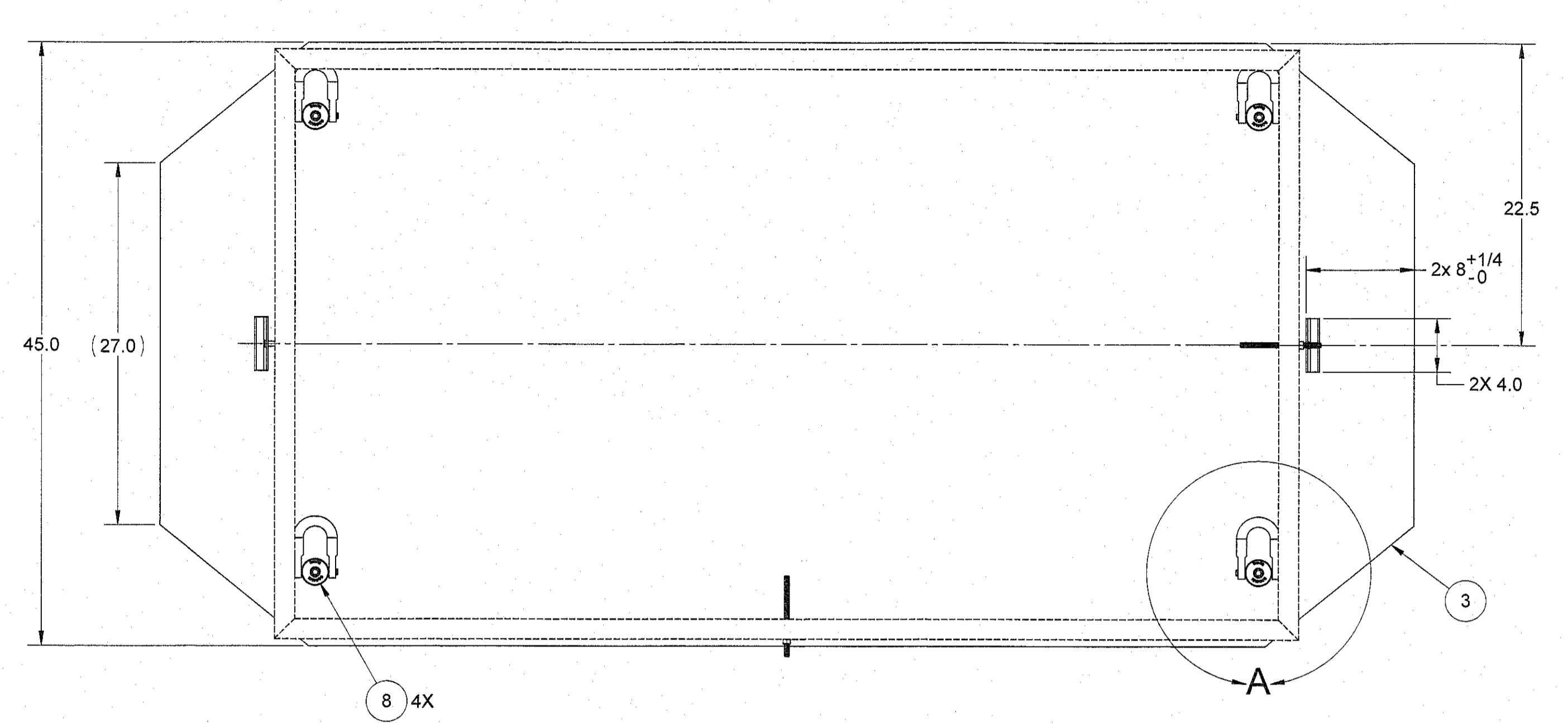


PARTS / MATERIAL LIST						
QTY	REQD	PART/DASH NUMBER	NOMENCLATURE/DESCRIPTION	MATERIAL/REFERENCE	SHT	ITEM NO
	-020	-010	MODIFIED 2.5" SHIELDING LID ASSEMBLY		1	1
						2
	AR		PLATE, 1" THK	ASTM A38	1	3
	AR		ANGLE, 1 X 1 X 1/4 THK	ASTM A38	1	4
						5
						6
						7
4		1016909	SWIVEL HOIST RING, 1/2"-13 UNC 2" THRD LENGTH, 2500 LBS WORKING LOAD, 180° PIVOT AND 360° SWIVEL HR-125	CROSBY	1	8
2		98306A921	CLEVIS PIN WITH HARPIN COTTER PIN, 3/8" DIAMETER, 1-1/2" LENGTH	MCMMASTER-CARR	1	9



- GENERAL NOTES (UNLESS OTHERWISE SPECIFIED)**
- BREAK ALL SHARP EDGES AND REMOVE ALL BURRS.
 - DIMENSION AND TOLERANCE SHALL BE PER ANSI/ASME Y14.5. ALL DIMENSIONS ARE IN INCHES.
 - TOLERANCES ARE AS FOLLOWS: (UNLESS OTHERWISE NOTED) DECIMAL: X ± 0.12, XX ± 0.05, XXX ± .005, ANGULAR: ± 5°; FRACTIONS: ± 1/16
 - APPROXIMATELY CALCULATED LID WEIGHT IS 1150 LBS
 - ALL WELDING AND WELDING INSPECTIONS SHALL BE DONE IN ACCORDANCE WITH AWS D1.1 AND SHALL BE VISUALLY INSPECTED.
 - HOIST RING (ITEM 8) MAY STAY IN PLACE AFTER LOADING OF DEBRIS BECAUSE OF THE HIGH RADIATION FIELD. THEREFORE, RIGGING SHALL ACCOUNT FOR THE ABILITY TO BE REMOVED OR LAY FLAT IN ORDER TO PUT THE SHIPPING CONTAINER LID ON. TORQUE BOLT TO MFG RATING.
 - PLACEMENT OF ITEM 4 AND 9 SHALL INTERFACE WITH THE 20" SPACER FRAME OR 16" SPACER FRAME HOLES IN DRAWING H-3-318589. DO NOT LIFT LID USING SPACER FRAME WHEN ATTACHED. ATTACHMENT OF SPACER FRAME IS TO BE USED TO KEEP THE SPACER FRAME FROM MOVING AROUND WHEN PLACING THE LID OR (WHEN INSTALLED), CONTAINER IS MOVED.
 - MODIFIED LID IS TO BE PLACED IN A 2.5" SHIELDING (H-3-318572) WHEN 30" BINS (H-3-317735) ARE INSTALLED.
 - LABEL WEIGHT AND DRAWING NUMBER ON TOP OF PLATE USING A WHITE PAINT PEN. LETTER SIZE SHALL BE NO LESS THAN 1/4" HIGH.
 - ABBREVIATIONS AND ACRONYMS SHALL BE PER H-9-006015 AND ASME Y14.38.

1 MODIFIED 2.5" SHIELDING LID ASSEMBLY
SCALE: 1:8

Approved for Construction
ISSUED BY
DOCUMENT CONTROL
Date: 5/23/2022 AK

324 BUILDING DISPOSITION PROJECT		CAUTION NOT COMPLETE WITHOUT CURRENT CHANGE DOCUMENTS FROM DATABASE		ATTENTION DESTROY THIS DOCUMENT BY SHREDDING MAY CONTAIN SENSITIVE INFORMATION	
FILED NO. 324	DATE 5/17/22	NAME DJ TEDESCHI	COMPANY BULLY	U.S. DEPARTMENT OF ENERGY Richland Operations Office	
REVISIONS: 1 REVISED PER DCN-SRP-205 0 INITIAL RELEASE PER DCN-SRP-162				MODIFIED 2.5" SHIELDING LID ASSEMBLY	
INDEX NO. 5010	DATE 5/17/22	NAME DJ TEDESCHI	COMPANY BULLY	REV 1	REV 1
DWG NUMBER: H-3-318590 TITLE: MODIFIED 2.5" SHIELDING LID ASSEMBLY SCALE: SHOWN				SHEET: 1 OF 1	

DWG NUMBER	TITLE	REF NUMBER	TITLE

8 7 6 5 4 3 2 1

F E D C B A

8 7 6 5 4 3 2 1

F E D C B A