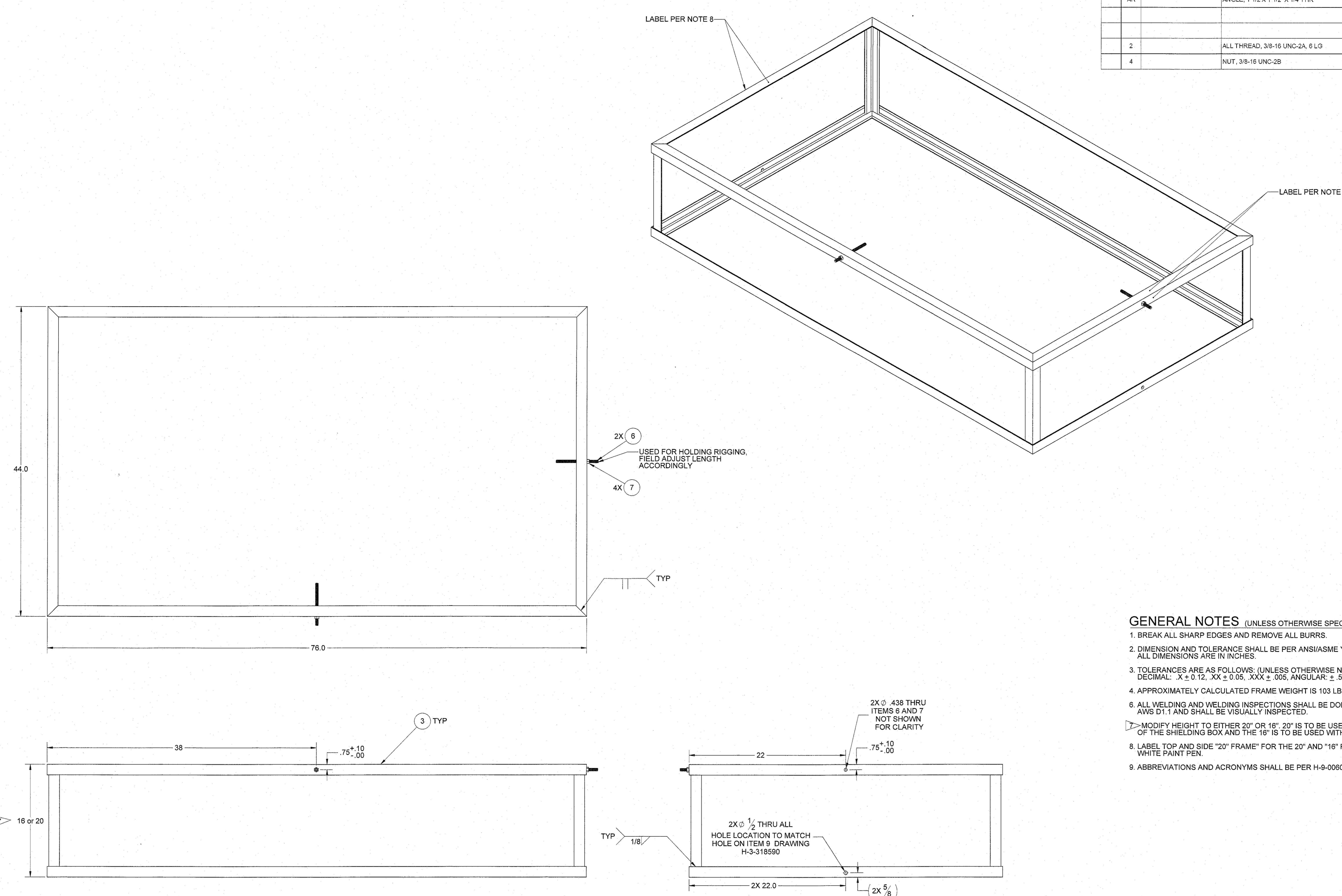


PARTS / MATERIAL LIST						
QTY	REQD	PART/DASH NUMBER	NOMENCLATURE/DESCRIPTION	MATERIAL/REFERENCE	SHT	ITEM NO
	X	-010	20" & 16" SPACER FRAME ASSEMBLY		1	1
						2
		AR	ANGLE, 1 1/2 X 1 1/2 X 1/4 THK	ASTM A36	1	3
						4
						5
2			ALL THREAD, 3/8-16 UNC-2A, 6 LG	ANY SST	1	6
4			NUT, 3/8-16 UNC-2B	CS OR ALLOY	1	7



- GENERAL NOTES (UNLESS OTHERWISE SPECIFIED)**
- BREAK ALL SHARP EDGES AND REMOVE ALL BURRS.
 - DIMENSION AND TOLERANCE SHALL BE PER ANSI/ASME Y14.5. ALL DIMENSIONS ARE IN INCHES.
 - TOLERANCES ARE AS FOLLOWS: (UNLESS OTHERWISE NOTED), FRACTIONS: 1/16" DECIMAL: .X ± 0.12, .XX ± 0.05, .XXX ± .005, ANGULAR: ± .5°
 - APPROXIMATELY CALCULATED FRAME WEIGHT IS 103 LBS FOR 20" AND 100 LBS FOR 16" HEIGHT
 - ALL WELDING AND WELDING INSPECTIONS SHALL BE DONE IN ACCORDANCE WITH AWS D1.1 AND SHALL BE VISUALLY INSPECTED.
 - MODIFY HEIGHT TO EITHER 20" OR 16". 20" IS TO BE USED WITHOUT THE LID ON TOP OF THE SHIELDING BOX AND THE 16" IS TO BE USED WITH THE LID ON THE SHIELDING BOX.
 - LABEL TOP AND SIDE "20" FRAME" FOR THE 20" AND "16" FRAME" FOR THE 16 FRAME USING A WHITE PAINT PEN.
 - ABBREVIATIONS AND ACRONYMS SHALL BE PER H-9-006015 AND ASME Y14.38.

1 20" & 16" SPACER FRAME ASSEMBLY
SCALE: 1:8

Approved for Construction
ISSUED BY
DOCUMENT CONTROL
Date: 5/23/2022 AK

324 BUILDING DISPOSITION PROJECT		CAUTION NOT COMPLETE WITHOUT CURRENT CHANGE DOCUMENTS FROM DATABASE		ATTENTION DESTROY THIS DOCUMENT BY SHREDDING MAY CONTAIN SENSITIVE INFORMATION	
BLDG. NO. 324	DATE 5/19/22	COMPANY S/19/22	DATE 5/19/22	U.S. DEPARTMENT OF ENERGY Richland Operations Office	
DESIGNED BY BA LILLY	DATE 5/19/22	COMPANY S/19/22	DATE 5/19/22	20" & 16" SPACER FRAME ASSEMBLY	
DESIGNED BY DJ TEDESCHI	DATE 5/19/22	COMPANY S/19/22	DATE 5/19/22	SIZE F	DRAWING NUMBER H-3-318589
DESIGNED BY GK JONES	DATE 5/19/22	COMPANY S/19/22	DATE 5/19/22	SHEET 1	REV 1
INDEX NO. 5010	DESIGN AUTHORITY N/A	SCALE SHOWN	PLOTID 1		

DWG NUMBER	TITLE	REF NUMBER	TITLE	REV NO.	DESCRIPTION
		1	REVISED PER DCN-SRP-205		
		0	INITIAL RELEASE PER DCN-SRP-162		
DRAWING TRACEABILITY LIST		NEXT USED ON		REVISIONS	