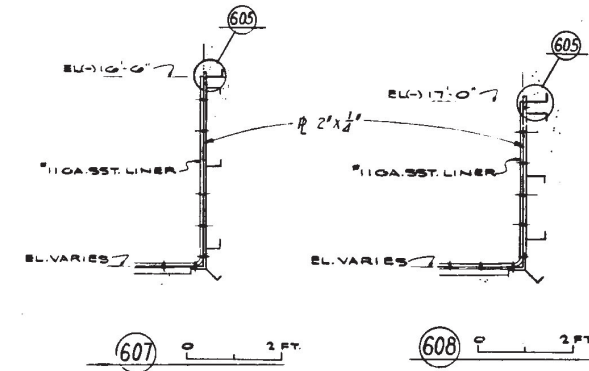
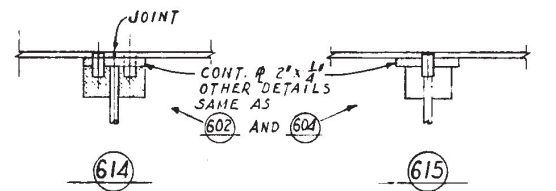
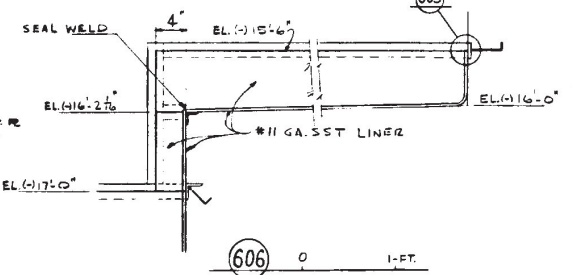
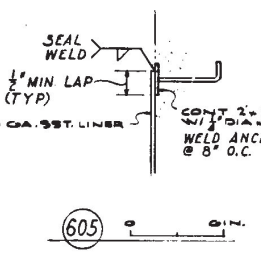
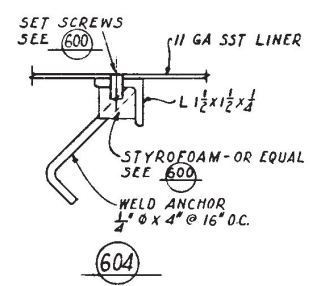
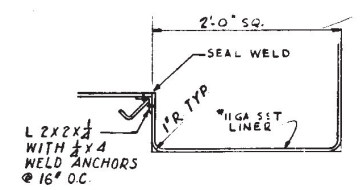
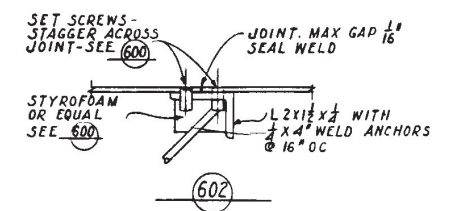
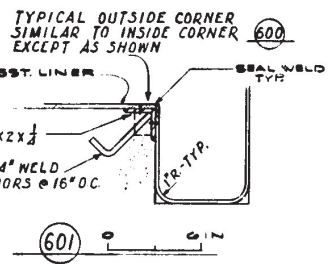
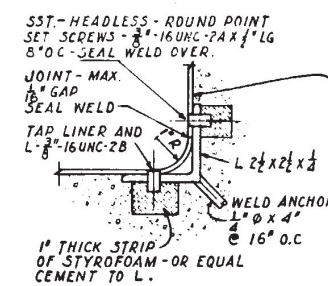
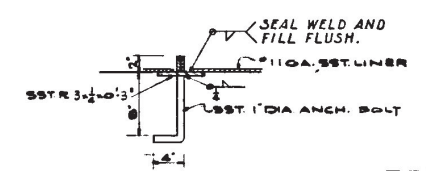


PLAN  
TANK VAULT  
1" = 3'-0"



GENERAL NOTES

- 1- ANGLES PER DETAIL 602 OR BACKING PLATES PER DETAIL 614 SHALL BE EMBEDDED IN THE CONCRETE AT ALL JOINTS BETWEEN SHEETS.
- 2- BACKING ANGLES PER DETAIL 604 OR BACKING PLATES PER DETAIL 615 SHALL BE EMBEDDED IN THE CONCRETE AT 1'-4\"/>
- 3- SEE SPECIFICATIONS FOR TYPE OF STAINLESS STEEL.
- 4- 11 GA SST LINER SHEETS SHALL BE BUTTED TOGETHER WITH WITH A MAX. SPACE OF 1/16 IN. BETWEEN SHEETS AND HELD IN PLACE WITH 3/8 IN. SST. SET SCREWS.
- 5- JOINTS AND SET SCREWS SHALL BE SEAL WELDED WITHOUT ADDITIONAL FILLER METAL AND GROUND FLUSH WITH TOP OF SHEET. ALL DEPRESSIONS GREATER THAN 1/64 IN. DEEP SHALL BE FILLED BY ADDING FILLER METAL AFTER INITIAL SEAL WELD.
- 6- WELDS WHICH PROJECT ABOVE THE SST SHEET ARE TO BE GROUND FLUSH W/SURFACE OF SHEET TO 125% FINISH
- 7- WIRE BRUSH ALL WELDS



609  
1" = 3'-0"  
TYPICAL FOR ALL ANCH. BOLTS FOR TANKS

NO.	REVISION	DESCRIPTION	REV. BY	DATE	APP. BY	PER. DATE	REF. USED ON
1	ADDED 609 - CIRCLE (8-4)						
2	CHECKED FOR AS-BUILT						
3	REVISED FOR AS-BUILT						

APPROVED FOR CONSTR.	U. S. ATOMIC ENERGY COMMISSION HANFORD ATOMIC PRODUCTS OPERATION
APPROVED FOR PURCHASE	GENERAL ELECTRIC
APPROVED FOR DESIGN	SST LINER DETAILS TANK VAULT AREA AREA 5
DATE	REV. NO. 0900
DATE	NO. H-3-20276
DATE	NONE

Note: Poor Quality Original