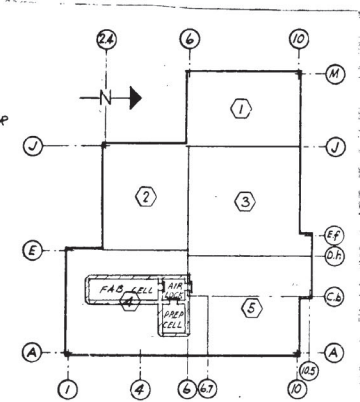
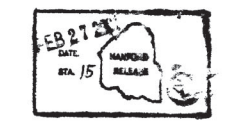


FOR DETAILS ON THIS DWG. SEE C.V.I. NO. 14323.  
FOR GENERAL NOTES SEE DWG H-3-20240



H-3-20239 SHEET 2



ESSENTIAL DRAWING

NO.	DATE	DESCRIPTION	BY	CHKD.	APP'D.
10	5-9-67	HWS CONST. SPECIFICATIONS			
9	4-3-2023	CRANE ARRGT HOT MET CELLS			
8	4-3-2024	ELECTRICAL POWER UNIT PLAN AREA 4			
7	4-1-2	H.R.P.O. STD. - ANCHOR BOLT			
6	4-3-2024	WALL LINERS HOT MET CELLS OS/EL			
5	4-3-2023	SST LINER DET. H.R.P.M. CELLS			
4	4-3-2024	HOT MET C. D.A.S. TO HIGH BAY CELL			
3	4-3-2024	HOT MET C. D.A.S. TO LOW BAY CELL			
2	4-3-2024	HOT MET C. D.A.S. TO LOW BAY CELL			
1	4-3-2015	DRAWING 275			

NO.	DATE	DESCRIPTION	BY	CHKD.	APP'D.
2	REV PER ECN-651052				

NO.	DATE	DESCRIPTION	BY	CHKD.	APP'D.
10	5-9-67	HWS CONST. SPECIFICATIONS			
9	4-3-2023	CRANE ARRGT HOT MET CELLS			
8	4-3-2024	ELECTRICAL POWER UNIT PLAN AREA 4			
7	4-1-2	H.R.P.O. STD. - ANCHOR BOLT			
6	4-3-2024	WALL LINERS HOT MET CELLS OS/EL			
5	4-3-2023	SST LINER DET. H.R.P.M. CELLS			
4	4-3-2024	HOT MET C. D.A.S. TO HIGH BAY CELL			
3	4-3-2024	HOT MET C. D.A.S. TO LOW BAY CELL			
2	4-3-2024	HOT MET C. D.A.S. TO LOW BAY CELL			
1	4-3-2015	DRAWING 275			

NO.	DATE	DESCRIPTION	BY	CHKD.	APP'D.
2	REV PER ECN-651052				

U. S. ATOMIC ENERGY COMMISSION  
HANFORD ATOMIC PRODUCTS OPERATION  
GENERAL ELECTRIC

HOT MET CELLS  
CRANE & SHIELD. DOORS

FUELS RECYCLE PLOT PLANT

324 INDEX NO. 0803  
H-3-20239