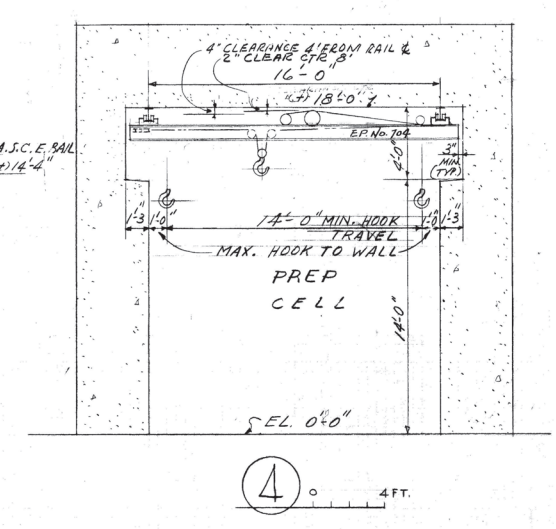
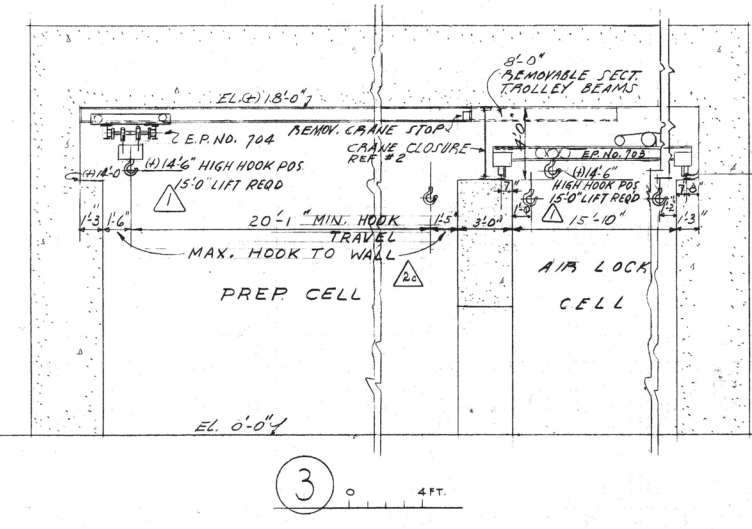
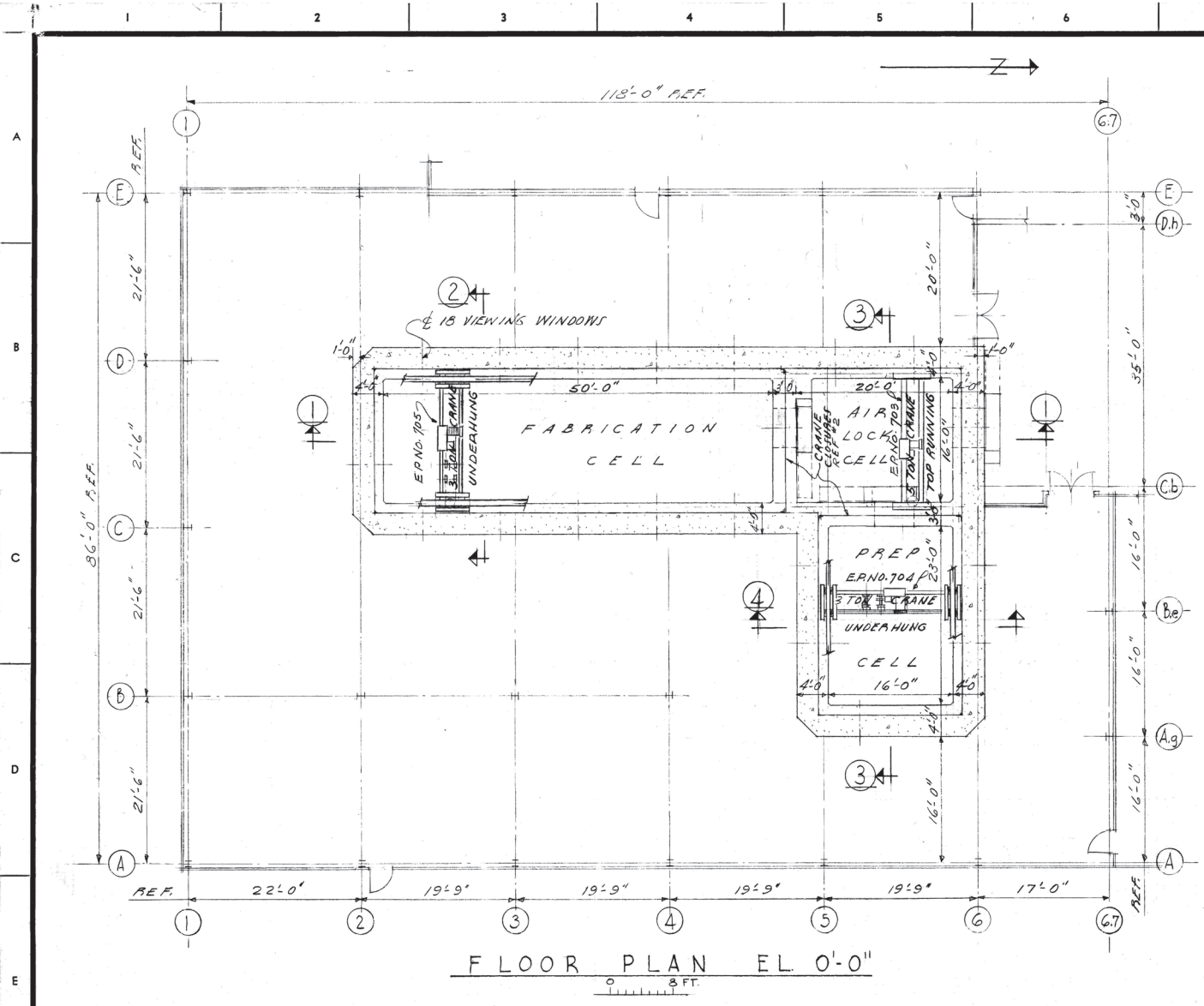
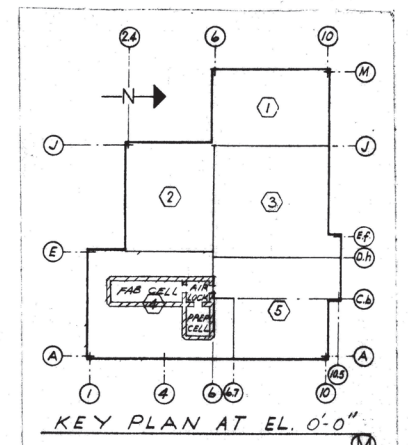
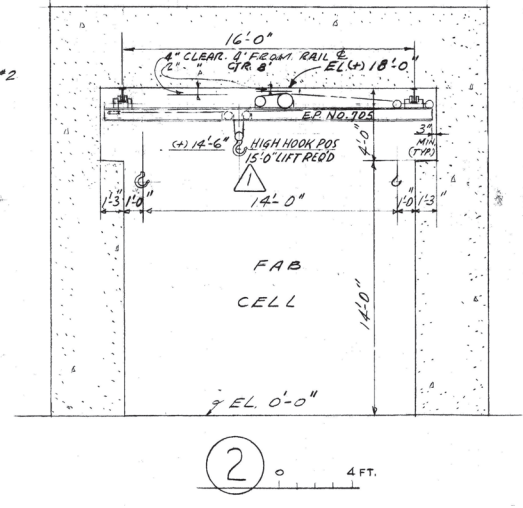
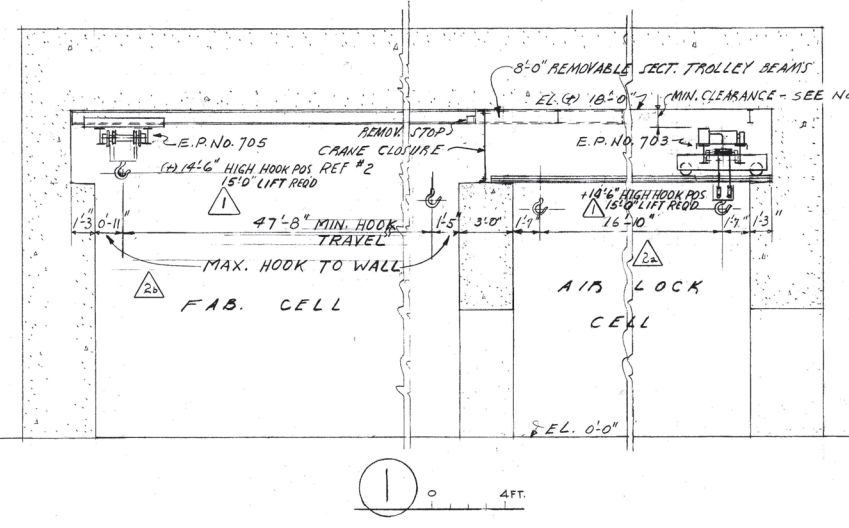


QTY.	PT. NO.	DESCRIPTION
------	---------	-------------



- NOTES**
- 1 - THIS DWS. FOR CONTRACTOR DESIGN & INSTALLATION INFORMATION. FOR ADDITIONAL DESIGN REQUIREMENTS SEE REF # 3
 - 2 - THE 5-TON AIRLOCK CRANE AND THE 3-TON CRANES SHALL BE ARRANGED SUCH THAT EACH 3-TON CELL CRANE CAN BE MOVED INTO THE AIR LOCK (NOT BOTH AT ONE TIME) AND THE CRANE CLOSURE REINSTALLED.



H-3-20236 SHEET 2

NO.	DESCRIPTION	REV. BY	DATE	APP'D BY	FOR	DATE
1	CHECKED FOR AS-BUILT
2	NOTES ADDED OR REWORKED

4	14.32.1	CVI. FOR CRANES
3	NWS 5967	CONST. SPEC.
2	H-3-20239	HOT MET. CELL CRANE & SHIELD WAS
1	H-3-20150	DRAWING LIST

APPROVED FOR CONST.	BY: [Signature]	DATE: 11-28-60
APPROVED FOR PURCHASE	BY: [Signature]	DATE: 11-28-60
APPROVED FOR DESIGN	BY: [Signature]	DATE: 11-28-60

U. S. ATOMIC ENERGY COMMISSION	HANFORD ATOMIC PRODUCTS OPERATION
GENERAL ELECTRIC	
CRANE ARRANGEMENT	
HOT METALLURGICAL CELLS	
FUELS RECYCLE PILOT PLANT	
BLDG. NO. 324	3900
H-3-20236	