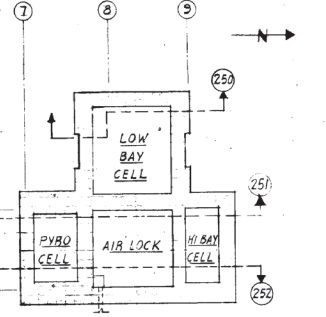


FOR CUBICLE DOOR SUPPORTS IN FLOOR SLABS AT (+) 11'-6" AND (+) 24'-6" SEE DWGS. - H-3-20204 H-3-20205 H-3-20216

NOTE - CONTRACTOR WILL INSTALL A PLATE PER DET. H-3-20285 IN THE CEILING OVER EACH HEAVY SHIELDING DOOR FOR ERECTION.



H-3-20213

TOLERANCE NOTES

- TOLERANCED SLEEVES & CUBICLES IN LOW BAY CELL SHALL BE WITHIN 1/8" EITHER SIDE OF TRUE POSITION HORIZONTALLY & VERTICALLY FROM DATUM LINES. THE FACES OF TOLERANCED SLEEVES & CUBICLES ON LOW BAY CELL SIDE SHALL LIE IN A PLUMB LINE 1/8" WIDE MAX. & ALL EPN'S GEE SHALL BE PARALLEL WITH HORIZONTAL DATUM LINE WITHIN 1/16"

REFERENCE DRAWINGS

(1) H-3-20209	WALL PERISCOPE THROUGH TUBE, PART 1
(2) H-3-20242	HP CELLS, CRANE & SHIELDING DISTON/BAY CELL
(3) H-3-20480	STONC/MPEL EXHTR. DUCTS & SHLGS
(4) H-3-20393	ELEC LTG PLAN 0'-0"
(5) H-3-20308	ELEC LTG PLAN 0'-0"
(6) H-3-20263	MANIPULATOR SLEEVE
(7) H-3-20272	STEP PLUG & SLEEVE HOT PILOT CELLS
(8) H-3-20397	VENTILATION - FL EL 0'-0"
(9) H-3-20243	DOOR DETAILS #131
(10) H-3-20273	DAMPER, PIT
(11) H-3-20446	TRANSFER MECH.
(12) H-3-20246	VIEW WINDOW
(13) H-3-20271	F'SEVES
(14) H-3-20216	CELLS, SECTRS & DETS
(15) H-3-20485	VENTILATION - PL EL (+) 11'-6"
(16) H-3-20274	SST LINER DETAILS
(17) H-3-20214	STR. ST. PLAN 8'-0" 33'-3"
(18) H-3-20252	SAMPLE & SERVICE CUBICLES BAY/BIA
(19) H-3-20241	DOOR DETAILS #178, 17852, 324
(20) H-3-20240	DOOR DETAILS #180 & 258
(21) H-3-20275	CUBICLE SHIE, DING
(22) H-3-20280	BEAM POCKET DETAILS
(23) H-3-20285	CRANE ARRANGEMENT
(24) H-3-20220	STR. ST. PLAN 8'-0" 33'-3"
(25) H-3-20219	STR. ST. PLAN 8'-0" 25'-1 1/2"
(26) H-3-20218	STR. ST. PLAN 8'-0" 11'-6"
(27) H-3-20205	STR. CONC PLAN 8'-0" 25'-6"
(28) H-3-20204	STR. CONC PLAN 8'-0" 11'-6"
(29) H-3-20200	STR. CONC PLAN 0'-0" FEEL. ELEV.
(30) H-3-20198	"NO. GENL. NOTE"
(31) H-3-20195	STR. CONC - BASEMENT PLAN
(32) H-3-20180	DRAINING LIST

NO.	DESCRIPTION	REV.	BY	APP'D	FOR	DATE	REVISIONS
1	ADD TOLERANCE	0-7	HTW			2-7-83	
2	ADD TOLERANCE	0-7	HTW			2-7-83	
3	ADD TOLERANCE	0-7	HTW			2-7-83	
4	ADD TOLERANCE	0-7	HTW			2-7-83	
5	ADD TOLERANCE	0-7	HTW			2-7-83	
6	ADD TOLERANCE	0-7	HTW			2-7-83	
7	ADD TOLERANCE	0-7	HTW			2-7-83	

CHECK PRINT	DATE	BY	APPROVED FOR CONST.	DATE	BY
SCALE SHOWN	DATE	BY	APPROVED FOR DESIGN	DATE	BY
U. S. ATOMIC ENERGY COMMISSION HANFORD ATOMIC PRODUCTS OPERATION GENERAL ELECTRIC					
STRUCTURAL CONCRETE HOT PILOT CELLS - AREA 3 SECTIONS & DETAILS					
ELECTRIC RECYCLE PILOT PL...					
H-3-20213					