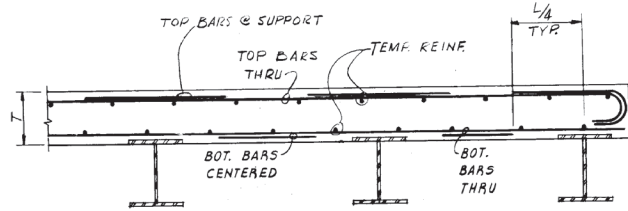


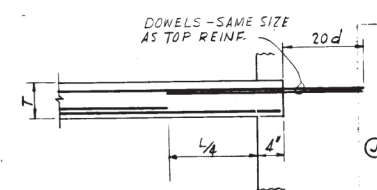
REINFORCED SLAB SCHEDULE

MARK	ELEV. AT TOP OF SLAB	T INCHES	MAIN REINFORCING						TEMP. REINF.	REMARKS
			TOP		BOTTOM		#	S		
			NORTH-SOUTH THRU	EAST-WEST THRU	EAST-WEST AT SUP.	NORTH-SOUTH AT SUP.				
S-101	0'-0"	6"	#5@12	#5@12	#5@12	#5@12	#5@12	#4@16 EF		
S-102	0'-0"	6"	#5@12	#5@12	#5@12	#5@12	#5@12	#4@16 EF		
S-103	0'-0"	6"	#5@12	#5@12	#5@12	#5@12	#5@12	#4@16 EF		
S-104	0'-0"	6"	#5@12	#5@12	#5@12	#5@12	#5@12	#4@16 EF		
S-201	(H) 11'-6"	4"	#4@12	NONE	#4@12	NONE	#4@12	#4@16 EF		
S-202	(H) 11'-6"	4"	#4@12	NONE	#4@12	NONE	#4@12	#4@16 EF		
S-203	(H) 11'-6"	4"	#4@12	#4@12	#4@12	#4@12	#4@12	#4@16 EF		
S-204	(H) 11'-6"	5 1/2"	#4@12	#4@12	#4@12	#4@12	#4@12	#4@16 EF		
S-210	(H) 11'-6"	5"	#4@14	#4@14	#4@14	#4@14	#4@14	#4@16 EF		
S-210a	(H) 11'-6"	5"	#4@15	#4@15	#4@15	#4@15	#4@15	#4@16 EF		
S-211	(H) 11'-6"	5"	#4@15	#4@15	#4@15	#4@15	#4@15	#4@16 EF		
S-211a	(H) 11'-6"	5"	#4@15	#4@15	#4@15	#4@15	#4@15	#4@16 EF		
S-212	(H) 11'-6"	5"	#4@16	#4@16	#4@16	#4@16	#4@16	#4@16 EF		
S-212a	(H) 11'-6"	5"	#4@16	#4@16	#4@16	#4@16	#4@16	#4@16 EF		
S-213	(H) 11'-6"	5"	#4@12	#4@12	#4@12	#4@12	#4@12	#4@16 EF		
S-214	(H) 11'-6"	5"	#4@15	NONE	#4@15	NONE	#4@15	#4@16 EF		
S-215	(H) 11'-6"	5"	#4@14	NONE	#4@14	NONE	#4@14	#4@16 EF		
S-216	(H) 11'-6"	5"	#4@18	#4@18	#4@18	#4@18	#4@18	#4@16 EF	TWO WAY REINF.	
S-217	(H) 15'-0"	4 1/2"	#4@18	#4@18	#4@18	#4@18	#4@18	#4@16 EF		
S-218	(H) 15'-0"	4 1/2"	#4@16	#4@16	#4@16	#4@16	#4@16	#4@16 EF		
S-301	(H) 22'-9"	5"	#4@16	#4@16	#4@16	#4@16	#4@16	#4@16 EF		
S-302	(H) 22'-9"	5"	#4@18	#4@18	#4@18	#4@18	#4@18	#4@16 EF		
S-303	(H) 22'-9"	5"	#4@14	#4@14	#4@14	#4@14	#4@14	#4@16 EF		
S-304	(H) 22'-9"	5"	#4@12	#4@12	#4@12	#4@12	#4@12	#4@16 EF		
S-305	(H) 22'-9"	5"	#4@16	#4@16	#4@16	#4@16	#4@16	#4@16 EF		
S-310	(H) 25'-6"	5"	#4@14	#4@14	#4@14	#4@14	#4@14	#4@16 EF		
S-310a	(H) 25'-6"	5"	#4@15	#4@15	#4@15	#4@15	#4@15	#4@16 EF		
S-311	(H) 25'-6"	5"	#4@15	#4@15	#4@15	#4@15	#4@15	#4@16 EF		
S-311a	(H) 25'-6"	5"	#4@15	#4@15	#4@15	#4@15	#4@15	#4@16 EF		
S-312	(H) 25'-6"	5"	#4@16	#4@16	#4@16	#4@16	#4@16	#4@16 EF		
S-312a	(H) 25'-6"	5"	#4@16	#4@16	#4@16	#4@16	#4@16	#4@16 EF		
S-313	(H) 24'-6"	5"	#4@15	#4@15	#4@15	#4@15	#4@15	#4@16 EF		
S-314	(H) 25'-6"	5"	#4@15	NONE	#4@15	NONE	#4@15	#4@16 EF		
S-316	(H) 25'-6"	5"	#4@18	#4@18	#4@18	#4@18	#4@18	#4@16 EF	TWO-WAY REINF.	

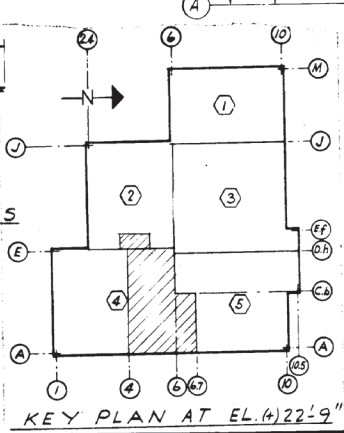
NOTE  
TOP BARS @ SUPPORT & BOT. BARS CENTERED ARE IN ADDITION TO THRU BARS



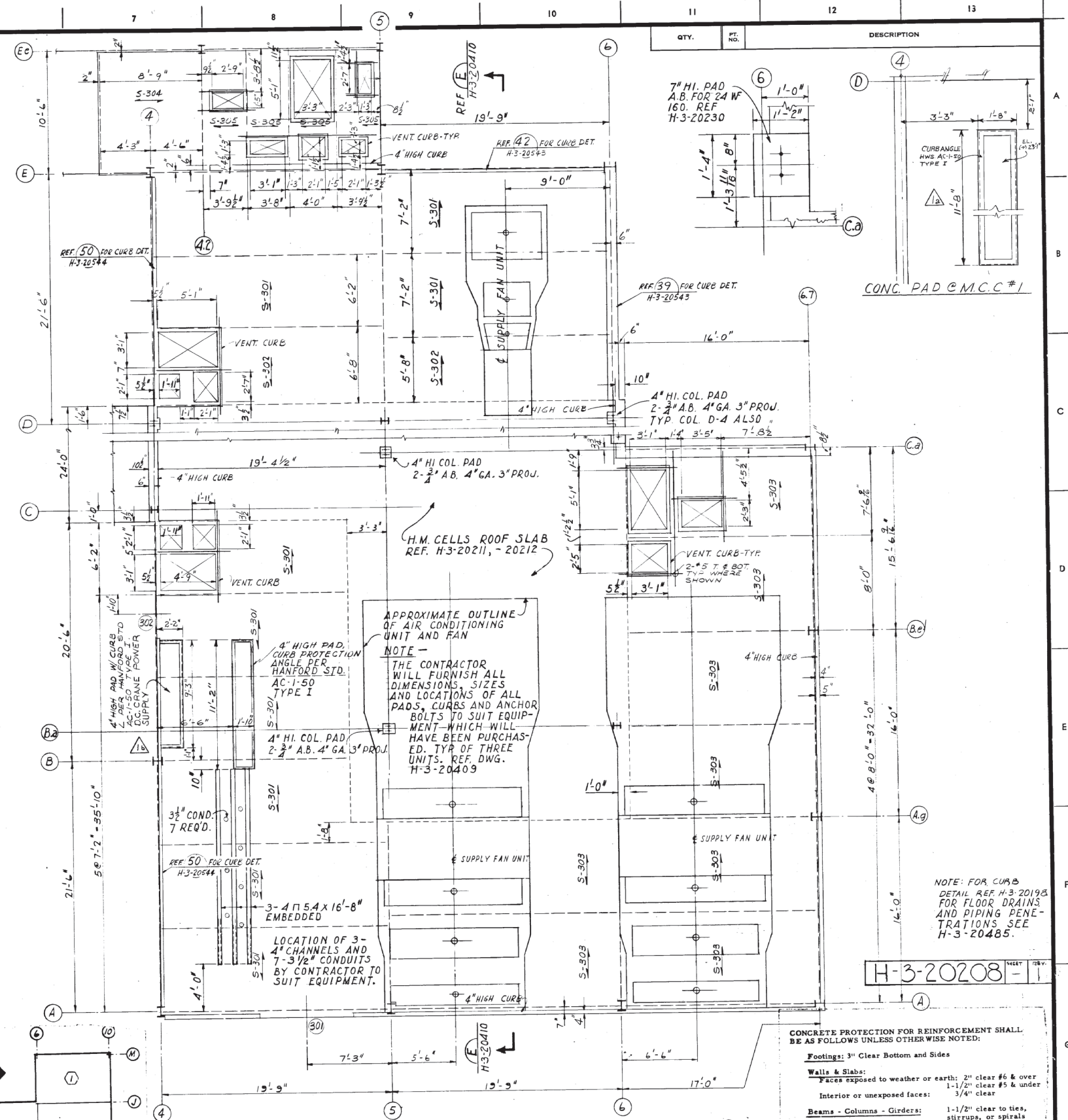
TYPICAL ONE-WAY SLAB  
SCALE: NONE



TYPICAL DETAIL AT THICK WALLS  
SCALE: NONE



KEY PLAN AT EL. 22'-9"



CONCRETE PROTECTION FOR REINFORCEMENT SHALL BE AS FOLLOWS UNLESS OTHERWISE NOTED:  
 Footings: 3" Clear Bottom and Sides  
 Walls & Slabs: Faces exposed to weather or earth: 2" clear #6 & over 1-1/2" clear #5 & under 3/4" clear Interior or unexposed faces: 1-1/2" clear to ties, stirrups, or spirals  
 Beams - Columns - Girders: 1-1/2" clear to ties, stirrups, or spirals

CHECK PRINT DATE: 11/16/82 SCALE: AS SHOWN DRAWN: J. GUNN CHECKED: J. GUNN DATE: 11/16/82 ISSUED: 11/16/82 DATE: 11/16/82 DATE: 11/16/82	COMMENT PRINT DATE: 11/16/82 DATE: 11/16/82 DATE: 11/16/82 DATE: 11/16/82 DATE: 11/16/82 DATE: 11/16/82 DATE: 11/16/82	APPROVED FOR CONST. APPROVED FOR PURCHASE APPROVED FOR DESIGN U.S. ATOMIC ENERGY COMMISSION HANFORD ATOMIC PRODUCTS OPERATION GENERAL ELECTRIC STRUCTURAL CONCRETE SLAB SCHEDULE AND DETAILS PLAN AT (+) 22'-9" AREA 4 FUELS RECYCLE PILOT PLANT 324 0902 H-3-20208
--	---	--

NO.	DESCRIPTION	REV. BY	DATE	APP'D BY	FOR	DATE
1	CHK. EN. CHECKED FOR AS-BUILT	...	...	...	...	...
2	REV. DET. Z.N. A-13, D. ADDED	...	...	...	...	...