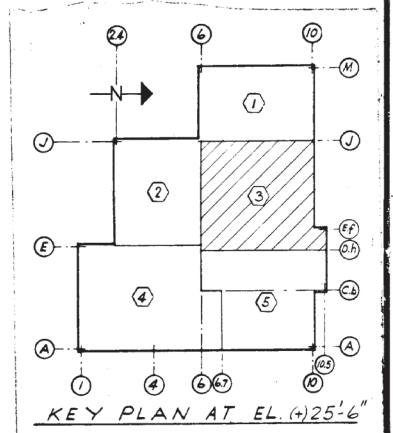
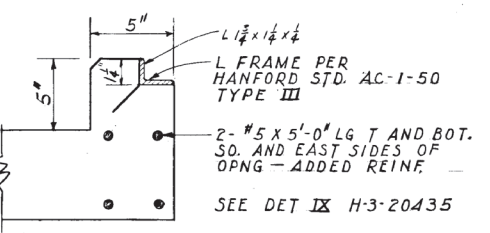
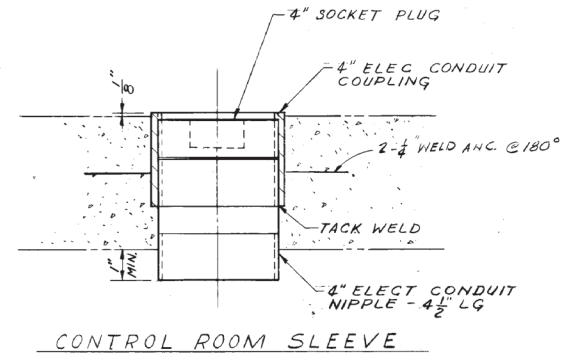
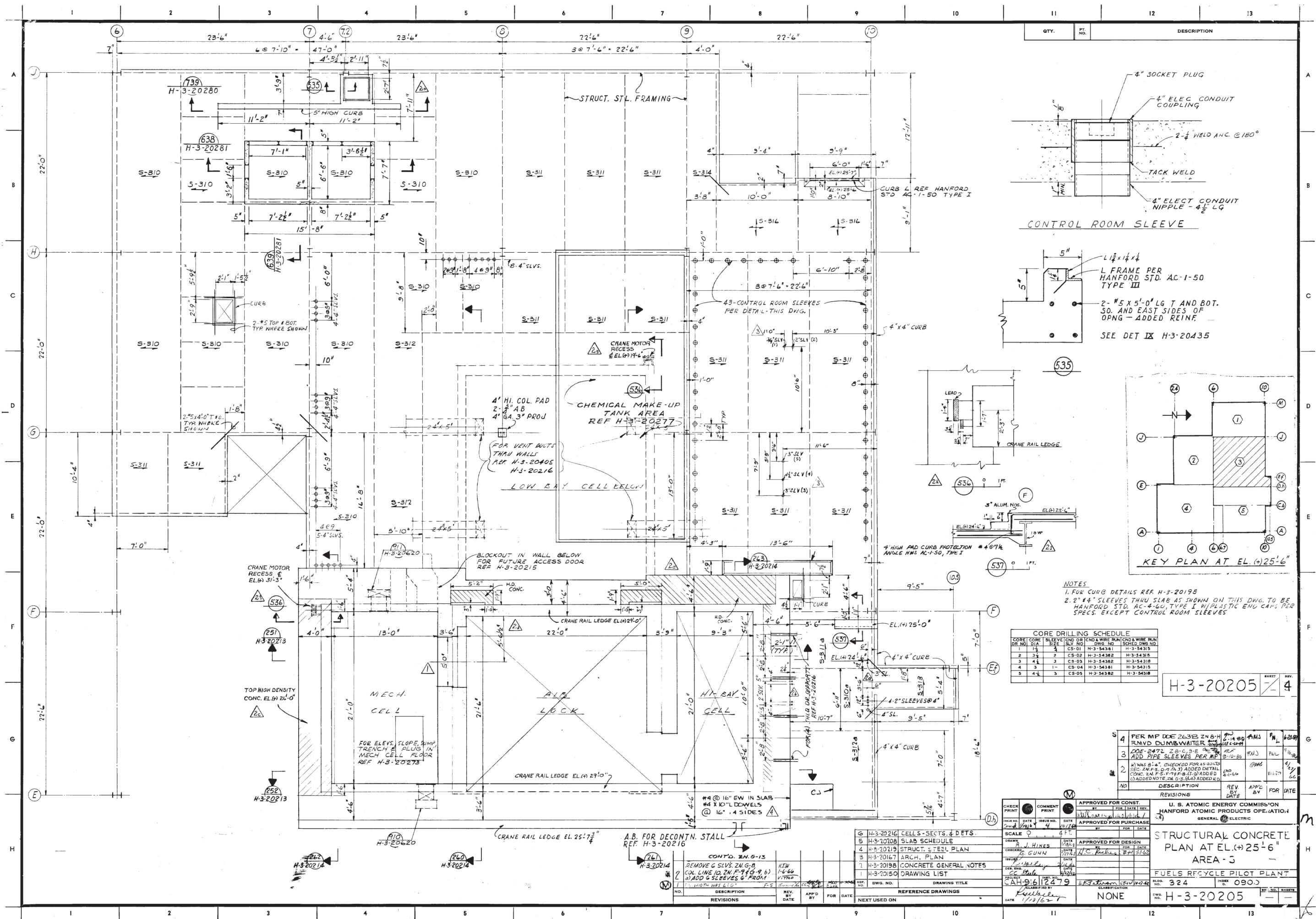


QTY.	FT. NO.	DESCRIPTION
------	---------	-------------



NOTES
 1. FOR CURB DETAILS REF. H-3-20198
 2. 2" x 4" SLEEVES THRU SLAB AS SHOWN ON THIS DWG. TO BE HANFORD STD. AC-4-60, TYPE I W/PLASTIC END CAPS PER SPECS. EXCEPT CONTROL ROOM SLEEVES

CORE NO.	CORE DIA.	SLEEVE SIZE	CND OR SLY NO.	CND & WIRE RUN	CND & WIRE RUN
1	4"	4"	CS-01	H-3-54381	H-3-54315
2	4"	4"	CS-02	H-3-54382	H-3-54316
3	4"	4"	CS-03	H-3-54382	H-3-54318
4	4"	4"	CS-04	H-3-54381	H-3-54315
5	4"	4"	CS-05	H-3-54382	H-3-54318

H-3-20205 SHEET 4

NO.	DESCRIPTION	REV.	APP'D BY	FOR DATE
4	PER MP DOE 2638 ZN G-B RND DUMBWATER	1	AMS	6/20/67
3	DOE 2472 ZN G-B RND DUMBWATER	1	AMS	6/15/66
2	ADD PIPE SLEEVES PER MP	1	AMS	11/20/66

CHECKED BY: [Signature] DATE: 1/12/67 SCALE: 1/8" = 1'-0"	APPROVED FOR CONST. BY: [Signature] DATE: 1/12/67	U.S. ATOMIC ENERGY COMMISSION HANFORD ATOMIC PRODUCTS OPERATIONS GENERAL ELECTRIC
DRAWN BY: J. HINES DATE: 1/12/67	APPROVED FOR DESIGN BY: [Signature] DATE: 1/12/67	STRUCTURAL CONCRETE PLAN AT EL. (+)25'-6" AREA-3
PROJECT NO. CAH-91612479 DRAWING TITLE: REFERENCE DRAWINGS	REVISIONS: NONE	FUELS RECYCLE PILOT PLANT BLDG. NO. 324 INDEX NO. 090J CWD NO. H-3-20205