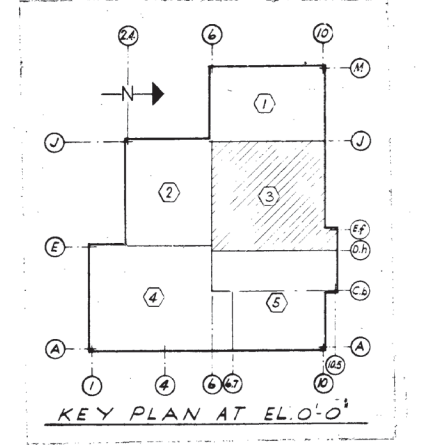


**FLOOR ELEVATIONS**  
 0 3 6 FT.  
 H.P. = HIGH POINT  
 L.P. = LOW POINT  
 ELEVATIONS ARE TO TOP OF CONC. ADD FOR TOP OF SST LINER.



**NOTES**  
 1. FOR LOCATION OF FLOOR DRAINS REF H-3-20-73  
 2. H.P. OF FLOORS EXCEPT WHERE OTHERWISE SHOWN TO BE 0'-0"

**CORE DRILLING SCHEDULE**

CORE DR NO	CORE DIA	SLEEVE SIZE	CND OR DIA	CND & WIRE RUN DIA	CND & WIRE RUN DIA	CND & WIRE RUN DIA	CND & WIRE RUN DIA	CND & WIRE RUN DIA	CND & WIRE RUN DIA	CND & WIRE RUN DIA
7	3"	1 1/2"	C-032	H-3-54348	H-3-54348	H-3-54348	H-3-54348	H-3-54348	H-3-54348	H-3-54348
8	4"	3"	C-031	H-3-54348	H-3-54348	H-3-54348	H-3-54348	H-3-54348	H-3-54348	H-3-54348
9	3"	2"	P-035	H-3-54321	H-3-54315	H-3-54315	H-3-54315	H-3-54315	H-3-54315	H-3-54315
10	2 1/2"	1 1/2"	P-028	H-3-54321	H-3-54315	H-3-54315	H-3-54315	H-3-54315	H-3-54315	H-3-54315
11	5 1/2"	4"	C-017	H-3-54348	H-3-54348	H-3-54348	H-3-54348	H-3-54348	H-3-54348	H-3-54348
12	5"	3 1/2"	C-026	H-3-54348	H-3-54348	H-3-54348	H-3-54348	H-3-54348	H-3-54348	H-3-54348

**REVISIONS**

NO.	DESCRIPTION	DATE	BY	APP'D	FOR	DATE
1	MP DOE 2638 ZNIO-G RMVD DUMM WATER PER 7-D, 4-F	11/21/93	AKM	RNL	11/21/93	
2	MP DOE-2472 ZAC 6-C-B ADD PIPE SLEEVES PER RCF 9-9-86	11/21/93	RWS	PNL	11/21/93	
3	AREA, ZONE G-B 2) DELETED GRAVEL FILL	11/21/93	AKM	UHS	11/21/93	

**REVISIONS (CONT.)**

NO.	DESCRIPTION	DATE	BY	APP'D	FOR	DATE
4	ADDED ROOM ZN. E-B 2) PFI CHECKED FOR AS-BUILTS 3) VOTE ZN. C-6 (A) ADDED SUMP FILL AREA ZN. G-B (B) ADDED 3) ADDED REC. ZN. F-5 (D) ADDED ZN. C-3 (D) ADDED NOTE ZN. G-6	11/21/93	AKM	VTR	11/21/93	
5	RECESS BOT EL. (+) 3'-0"	11/21/93	AKM	VTR	11/21/93	

**REFERENCE DRAWINGS**

DWG. NO.	TITLE
H-3-20164	STAIR PLAN EL. 0'-0"
H-3-20273	SST LINER DETS - CELLS
H-3-20276	CELLS - SECT. & DETS.
H-3-20193	GENERAL CONCRETE NOTES

**H3-20200** SHEET 4

**NOTES**

APPROVED FOR CONSTRUCTION

U. S. ATOMIC ENERGY COMMISSION  
 HANFORD ATOMIC PRODUCTS OPERATION  
 GENERAL ELECTRIC

**STRUCTURAL CONCRETE PLAN @ EL. 0'-0" AREA 3**

FUELS RECYCLE PILOT PLANT

PLD. NO. 324 INDEX NO. 0900

H3-20200