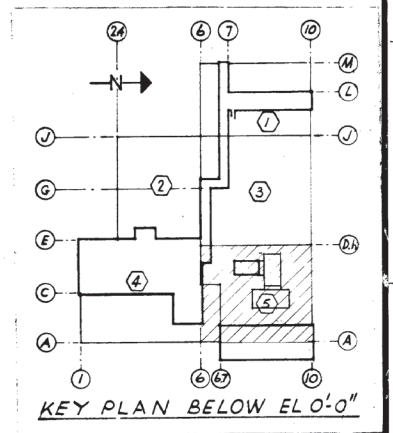
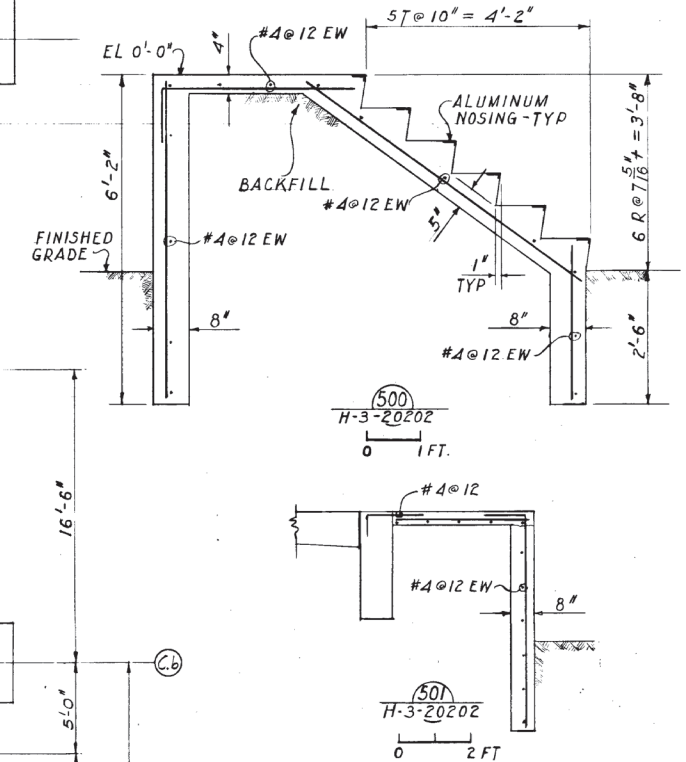
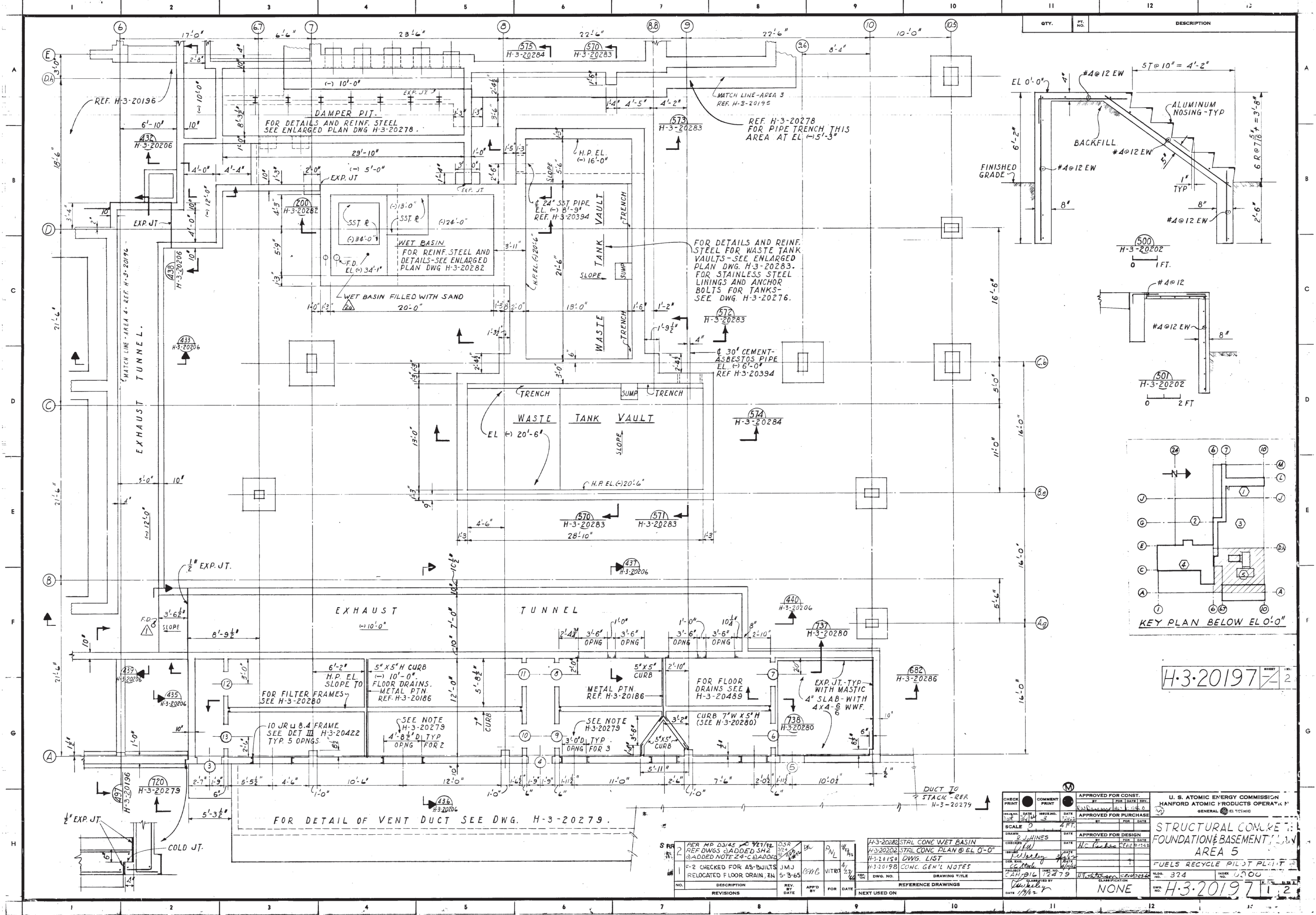


QTY.	PT. NO.	DESCRIPTION
------	---------	-------------



H.3.20197 2

NO.	DESCRIPTION	REV. BY	DATE	APP'D BY	FOR DATE
1	PER MP D3145 2/27/72	SSR	2/27/72		
2	REF DWGS ADDED SH2				
3	ADDED NOTE 24-C				
4	ADDED				
5	F-2 CHECKED FOR AS-BUILTS	JMJ	4/27/79		
6	RELOCATED FLOOR DRAIN, EN	S-3-65			

CHECKED BY: <i>[Signature]</i> DATE: 1/11/79 SCALE: 1/4" = 1'-0" DRAWN BY: <i>[Signature]</i> DATE: 1/11/79 PROJECT NO.: H-3-20197 SHEET NO.: 2 DRAWING TITLE: STRUCTURAL CONCRETE FOUNDATION & BASEMENT PLAN AREA 5 REVISIONS: SEE REVISION TABLE NEXT USED ON:	APPROVED FOR CONST. BY: <i>[Signature]</i> DATE: 1/11/79 APPROVED FOR PURCHASE BY: <i>[Signature]</i> DATE: 1/11/79 APPROVED FOR DESIGN BY: <i>[Signature]</i> DATE: 1/11/79 U.S. ATOMIC ENERGY COMMISSION HANFORD ATOMIC PRODUCTS OPERATING PLANT GENERAL ELECTRIC FUELS RECYCLE PILEST PLANT I.D. NO.: 324 INDEX NO.: 0300 H.3.20197 1, 2
---	--