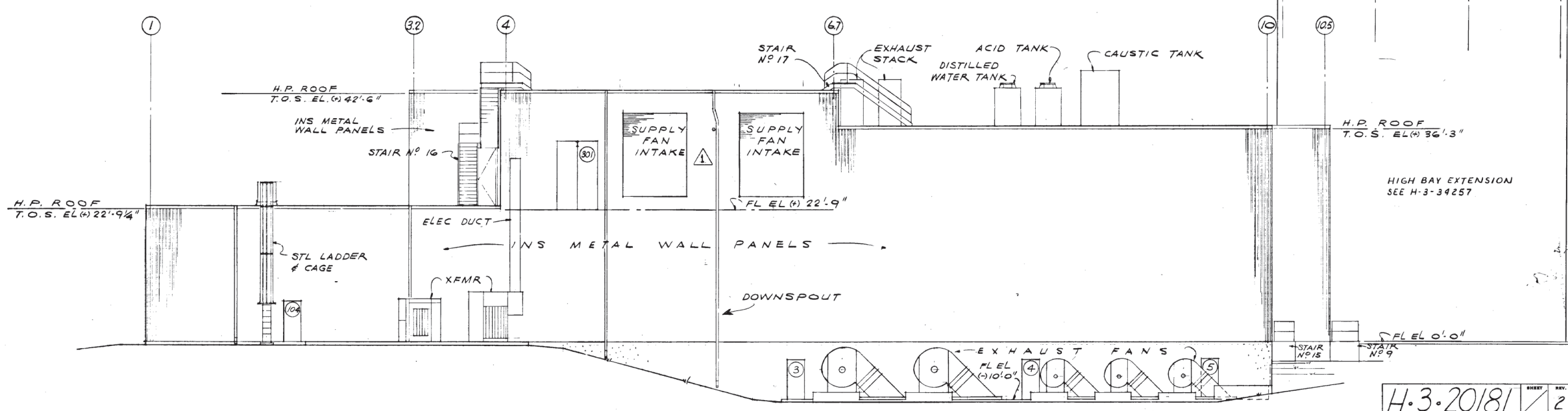


N O R T H E L E V A T I O N



E A S T E L E V A T I O N

H.3.20181 SHEET NO. 2

NO.	DESCRIPTION	REV. BY	DATE	APP'D BY	FOR	DATE
1	CHECKED FOR AS-BUILTS	JMJ	3-22-65	JTRO		
2	RELOC. DWN. SPT. ZN. E-7	JMJ	3-22-65	JTRO		
3	REF. DWG. #2 PER MP ER DA. ADDED HIGH BAY EXT. &	JMJ	3-22-65	JTRO		

CHECK PRINT	COMMENT PRINT	APPROVED FOR CONST.	BY	DATE	REV.
SCALE	1" = 8' FT	APPROVED FOR PURCHASE	BY	DATE	
DRAWN	DATE	APPROVED FOR DESIGN	BY	DATE	
ISSUED	DATE				
U.S. ATOMIC ENERGY COMMISSION HANFORD ATOMIC PRODUCTS OPERATION GENERAL ELECTRIC	ARCHITECTURAL NORTH & EAST ELEVATIONS		FUELS RECYCLE PILOT PLANT		
NO. 1603		NO. 324		NO. 0801	
H.3.20181		H.3.20181		H.3.20181	