

NO	DESCRIPTION	REV BY DATE	APP'D BY	FOR DATE
1	REVISED P.L. LOAD, AREA 1			
2	REVISED P.L. LOAD, AREA 2			
3	REVISED P.L. LOAD, AREA 3			

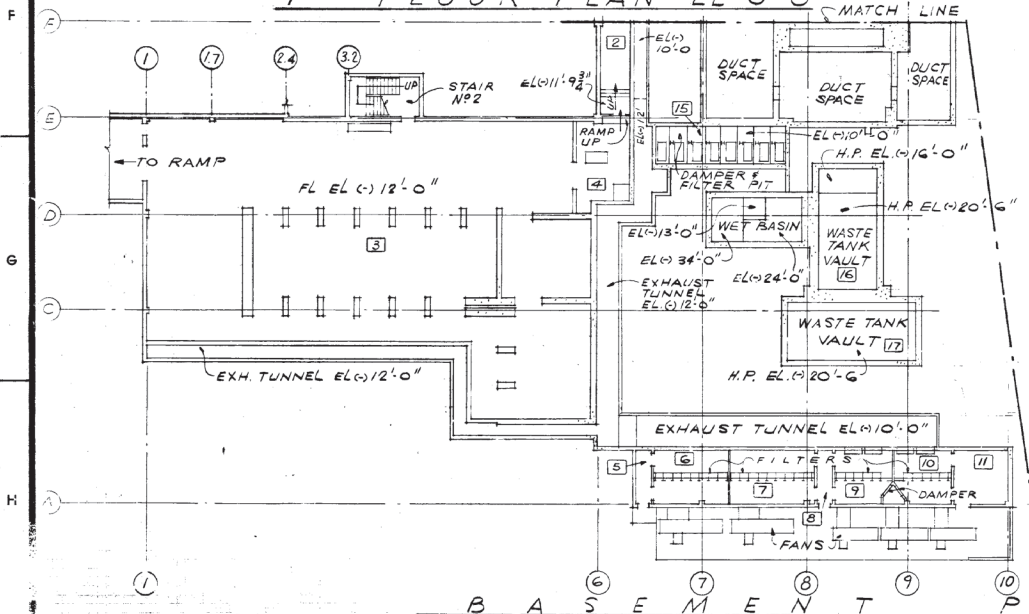
1ST FLOOR PLAN EL 0'-0"

2ND FLOOR PLAN EL (+) 11'-6"

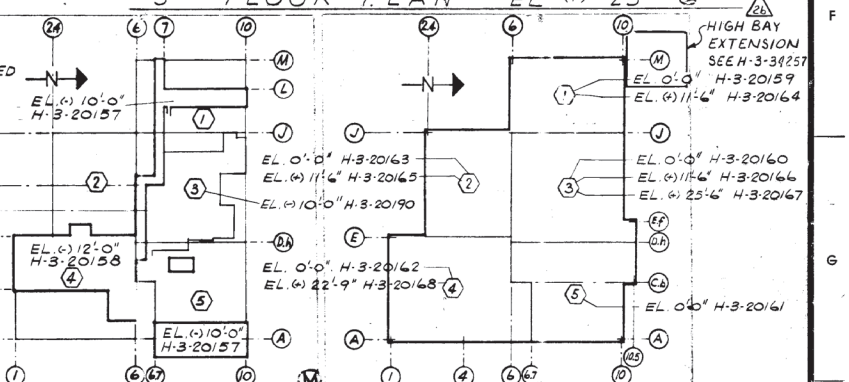
3RD FLOOR PLAN EL (+) 25'-0"

ALLOWABLE FLOOR LOADING

- AREA 1 1ST FL - H-15 HIGHWAY LOADING (EXCEPT COLD CANYON BETWEEN COL LINES 1/6-6, 200#/SQ.FT.)
- AREA 2 2ND FL - 100#/SQ.FT. OR 2000# CONCENTRATED LOAD ON 2'-6" x 2'-6" AREA.
- AREA 3 HOT PILOT CELLS - AIRLOCK, LOW BAY CELL, HIGH BAY CELL - 100#/SQ.FT. OR 30 TON CONCENTRATED LOAD ON 4'-0" x 4'-0" AREA.
- AREA 4 METALLURGICAL CELLS - AIRLOCK, PREP. CELL & FAB. CELL - 1000#/SQ.FT. OR 30 TON CONCENTRATED LOAD ON 4'-0" x 4'-0" AREA.
- AREA 5 BETWEEN COL LINES D4 & C6 - 30 TON CONCENTRATED LOAD ON 3'-0" x 3'-0" AREA WITH MIN. SPACING OF 6'-0" EXCEPT NOT TO EXCEED 2 SUCH LOADS OVER DAMPER & FILTER PIT. AVOID HEAVY CONCENTRATED LOADS OVER TUNNEL. BETWEEN COL LINES C6 & A - 200#/SQ.FT. OR 10,000# CONCENTRATED LOAD ON 4'-0" x 4'-0" AREA.



BASEMENT PLAN



ARCHITECTURAL KEY PLANS

NO.	DESCRIPTION	REV. BY DATE	APP'D BY	FOR DATE
1	REVISED P.L. LOAD, AREA 1			
2	REVISED P.L. LOAD, AREA 2			
3	REVISED P.L. LOAD, AREA 3			

APPROVED FOR CONST. BY [Signature] DATE [Date]

U. S. ATOMIC ENERGY COMMISSION
HANFORD ATOMIC PRODUCTS OPERATION
GENERAL ELECTRIC

APPROVED FOR PURCHASE BY [Signature] DATE [Date]

APPROVED FOR DESIGN BY [Signature] DATE [Date]

SCALE 1/8" = 1'-0"

PROJECT NO. H-3-20156

INDEX NO. 0800

DATE 7-11-64