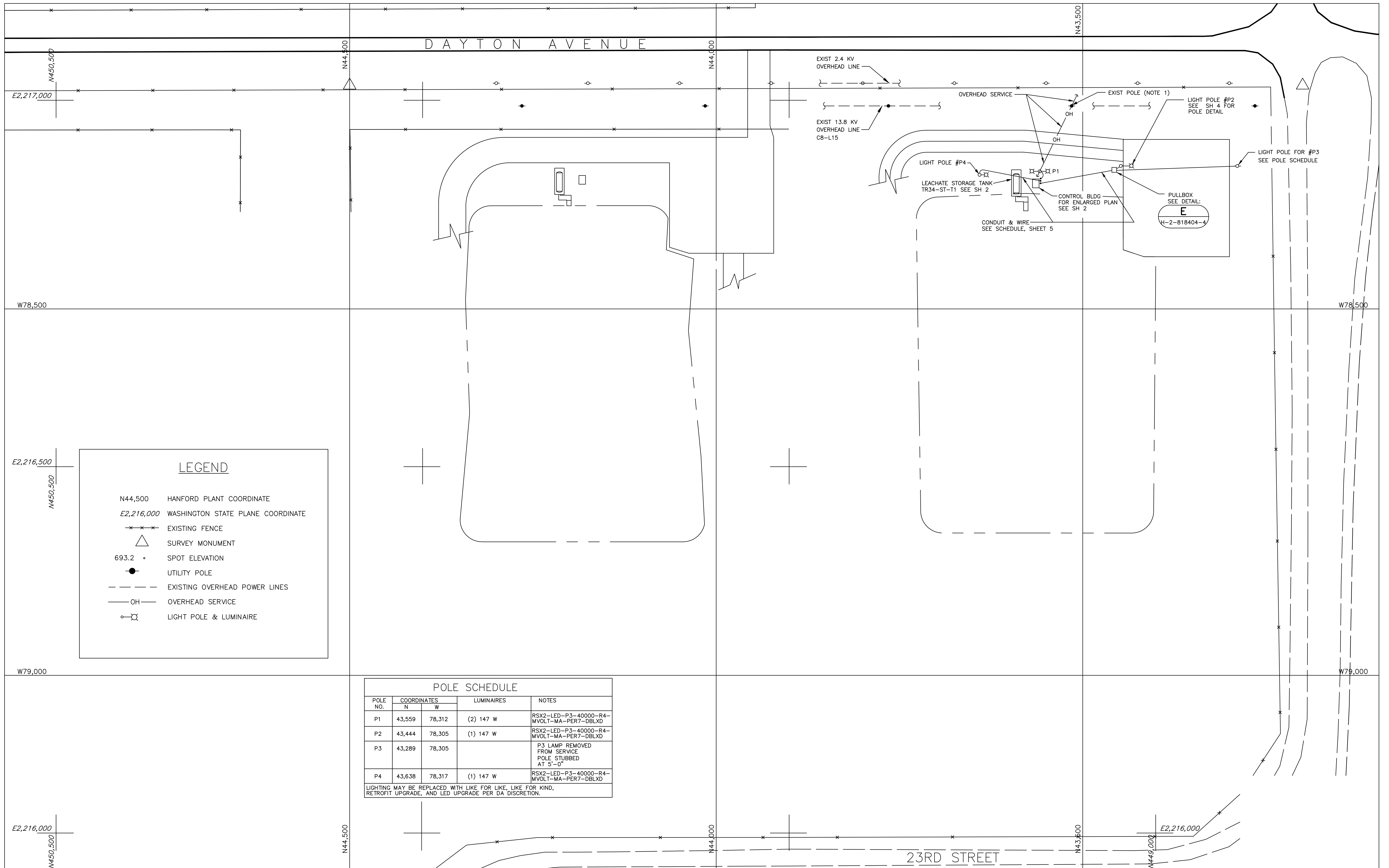


DAYTON AVENUE

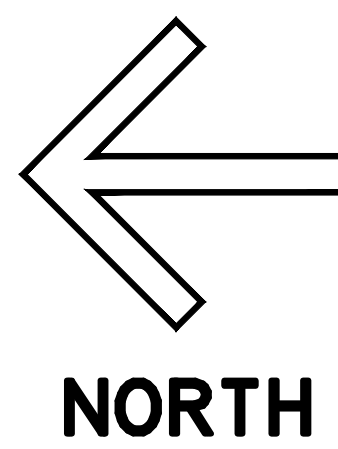
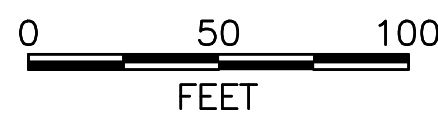


LEGEND

- N44,500 HANFORD PLANT COORDINATE
- E2,216,000 WASHINGTON STATE PLANE COORDINATE
- x---x---x--- EXISTING FENCE
- △ SURVEY MONUMENT
- 693.2 • SPOT ELEVATION
- UTILITY POLE
- --- --- EXISTING OVERHEAD POWER LINES
- OH OVERHEAD SERVICE
- ○ LIGHT POLE & LUMINAIRE

POLE SCHEDULE				
POLE NO.	COORDINATES		LUMINAIRES	NOTES
	N	W		
P1	43,559	78,312	(2) 147 W	RSX2-LED-P3-40000-R4-MVOLT-MA-PER7-DBLXD
P2	43,444	78,305	(1) 147 W	RSX2-LED-P3-40000-R4-MVOLT-MA-PER7-DBLXD
P3	43,289	78,305		P3 LAMP REMOVED FROM SERVICE POLE STUBBED AT 5'-0"
P4	43,638	78,317	(1) 147 W	RSX2-LED-P3-40000-R4-MVOLT-MA-PER7-DBLXD

LIGHTING MAY BE REPLACED WITH LIKE FOR LIKE, LIKE FOR KIND, RETROFIT UPGRADE, AND LED UPGRADE PER DA DISCRETION.



Approved for Public Release;
Further Dissemination Unlimited



- NOTES:
- TIE IN AT EXISTING POLE AS DIRECTED BY CONSTRUCTION MANAGER.
 - CONDUIT RUNS AND WIRE TO PUMPS, LEVEL CONTROLS, AND CONTROL STATIONS SHOWN ON SH 5.

DWG NUMBER	TITLE	REF NUMBER	TITLE	DESCRIPTION
H-2-99275	TOPOGRAPHIC MAP LOW LEVEL BURIAL GROUND (SHEETS 2,3, AND 7)	4	REVISED PER ECR-24-000191	

BLOCK NO. 218W5

CAUTION
NOT COMPLETE WITHOUT CURRENT CHANGE DOCUMENTS FROM DATABASE

ATTENTION
DESTROY THIS DOCUMENT BY SHREDDING MAY CONTAIN SENSITIVE INFORMATION

DATE	COMPANY	NAME
5/12/2001	CPCC	H0059958-RE MITCHELL
5/12/2001	CPCC	H773842-MM RICHARDS
5/12/2001	CPCC	H7665613-JT PEREZ
5/12/2001	CPCC	H773842-MM RICHARDS
5/12/2001	CPCC	H2031133-F AGUILAR

INDEX NO. 7401

U.S. DEPARTMENT OF ENERGY
Richland Operations Office

**ELECTRICAL SITE PLAN
RMW LAND DISPOSAL FACILITY
NON-DRAG-OFF (TR-34)**

SCALE AS SHOWN

20487

DOE_TB.F.DWG (JAN 2012)