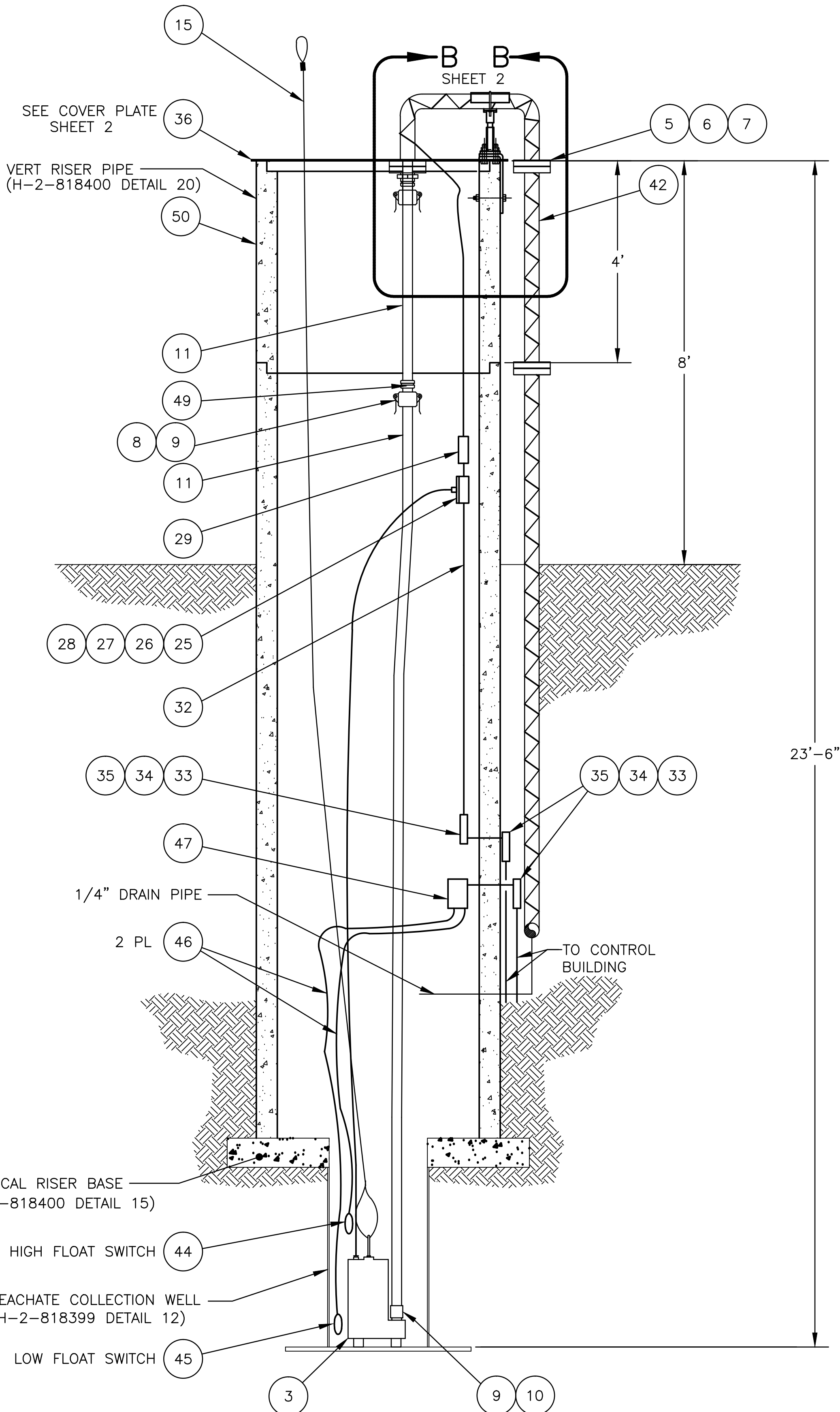


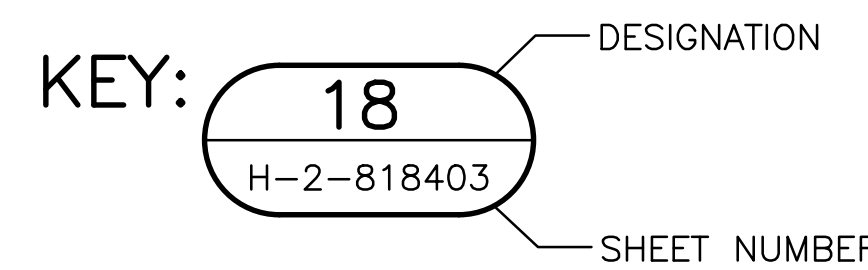
**1 SUMP PUMP INSTALLATION**  
PRIMARY LEACHATE SUBMERSIBLE PUMP TR34-PS-P2  
SCALE: NONE



**SECTION A VERTICAL RISER**  
SCALE: NONE

**NOTES:**

- ANCHOR BOLTS TO BE INSTALLED PER MANUFACTURERS INSTRUCTIONS.
- FIELD TO CONSTRUCT AND INSTALL LIFTING HANDLES AS REQUIRED.
- 
- FIELD TO CONSTRUCT AND INSTALL TIE DOWNS AS REQUIRED.
- SIGNAL CABLES FROM TRANSDUCERS SHALL BE TERMINATED IN JUNCTION BOX. IDENTICAL WIRES SHALL CONTINUE FROM TERMINAL STRIP TO CONTROL BUILDING.
- FIELD TO FABRICATE SLOT AND FIT ITEM 36 AS REQUIRED.
- WELD PER AWS D1.1-1996. WELD QUALIFICATION PER ASME SECTION IX ARE ACCEPTABLE.
- PREPARE AND PAINT ALL EXPOSED CARBON STEEL SURFACES WITH ONE COAT OF AMERGAURD #148 PRIMER AND ONE FINISH COAT OF AMERGAURD #220/COLOR YELLOW. PER MANUFACTURERS SPECIFICATIONS.
- FIELD TO FABRICATE AS REQUIRED.
- 
- DRILL  $\phi$  9/16" THRU ITEM 24. USE ITEM 21 AS TEMPLATE.



PARTS/MATERIAL LIST						
QTY REQD	REF DES	PART/DASH NUMBER	NOMENCLATURE/DESCRIPTION	MATERIAL/REFERENCE	SHEET	ITEM NO.
1	TR34-PS-P2	WHRH-20-43	SUBMERSIBLE PUMP, 130 GPM, 2" NPT W/30' POWER CORD	MYERS		3
1		(3020-F-SS)	REDUCER ADAPTER, 3" X 2" MNPT	(DIXON "ANDREWS") CAM AND GROOVE		4
6			3" IPS FLANGE ADAPTER SDR 11 & 3" SLIP-ON FLANGE CLASS 150 (4 BOLT)	ANSI B15.5		5
AR			STUD BOLT SET FOR 3" FLANGE	SST		6
6		(#3000)	GASKET, 1/8" FOR 3" SLIP-ON FLG	(GARLOCK)		7
2		(SGM 200-S)	FITTING, 2" X HOSE SHANK	(DIXON "ANDREWS") CAM AND GROOVE		8
3		(SGS-200)	HOSE STRAP, 2"	(DIXON "ANDREWS") CAM AND GROOVE		9
1		(RC 200)	COUPLER, 2" X HOSE SHANK	(DIXON "ANDREWS") CAM AND GROOVE		10
2		(#4931625)	WATER HOSE, 2" L=AR	(SEMPENT INDUSTRIAL)		11
1			EYE BOLT, 1" X 3/8" 16 UNC-2A	CS GALV		12
1			JAM NUT, 3/8" 16 UNC-2B	CS GALV		13
1		(#3860T53)	SAFETY ANCHOR SHACKLE, 3/8"	(MCMMASTER-CARR)		14
1			WIRE ROPE, 300LB CAPACITY OR GREATER			15
2		(#3623T15)	OVAL SLEEVE, 1/8", N-TYPE	(MCMMASTER-CARR)		16
2			1/4-20 UNC X 6" LONG	ASTM A-307		17
1		(B 3154-4X)	SHORT INSULATION PROTECTION SHIELD	(B-LINE)		18
1		(B 3090-2 1/2)	PIPE SUPPORT W/U-BOLT	(B-LINE)		19
1						20
1		(B 3088-1 1/2)	BASE STAND, L=AR	(B-LINE)		21
1						22
1						23
1			PLATE, 1/4" X 4" L=AR	ASTM A-36		24
1		(#7164K52)	CABLE PLUG, TURN LOCK, NEMA 3R L16-20, 480 VAC	(MCMMASTER-CARR)		25
1		(#7164K81)	PLUG BOOT	(MCMMASTER-CARR)		26
1		(#7164K54)	RECEPTACLE, TURN LOCK, NEMA 3R L16-20, 480 VAC	(MCMMASTER-CARR)		27
1		(#1727187) (SP41G)	RCPT BOX BLANK COVER, SINGLE GASKET, WP	(STONEWAY SUPPLY) (PERFECTLINE)		28
1			HANDY ELECTRICAL JUNCTION BOX			29
1		(#7159K11)	DUPLEX RCPT, NEMA 5-15, 125 VAC	(MCMMASTER-CARR)		30
1		(#171577) (FSK-WRD)	DUPLEX RCPT COVER, WP	(STONEWAY SUPPLY) (APPLETON)		31
AR		(#1744855)	RIGID CONDUIT, 3/4"	(STONEWAY SUPPLY)		32
3		(#1744897)	CONDUIT BODY, 3/4", TYPE LB	(STONEWAY SUPPLY)		33
3		(#1710729)	CONDUIT BODY COVER, 3/4"	(STONEWAY SUPPLY)		34
3		(#1711016)	SEALING GASKET	(STONEWAY SUPPLY)		35
1			COVER PLATE, $\phi$ 5'-2" X 1/4"	CS GALV	2	36
4			HEAVY HEX BOLT, 1/2"-13 UNC-2A X 3"	ASTM A-307		37
4			HEAVY HEX NUT, 1/2"-13 UNC-2A X 3"	ASTM A-307		38
1						39
						40
AR			PIPE, 3" $\phi$ , HDPE, SCHEDULE 40, L=AR	ASTM A-106B		41
AR			HEAT TRACE			43
1		2900	FLOAT SWITCH, N.O. CONTACTS	CONERY		44
1		2903	FLOAT SWITCH, N.O. CONTACTS	CONERY		45
AR			16/2 SJOW-A CABLE	FLEXIBLE CORD		46
1			JUNCTION BOX, NEMA 3R			47
4			FLAT WASHER, 1/2"	ASTM A-307		48
1		(200-E-PM)	MALE ADAPTER, 2" X HOSE SHANK	(DIXON "ANDREWS") CAM AND GROOVE		49
5			48" O-RING GASKETED MANHOLE, "BARREL SECTION", 5" SIDE WALL, REF: WHC-S-045			50

DWG NUMBER	TITLE
H-2-818402	LEACHATE COLLECTION TANK & PIPING RMW LAND DISPOSAL FACILITY NON-DRAG-OFF (TR-34)
H-2-818400	SIDE SLOPE AND VERTICAL RISER PIPES RMW LAND DISPOSAL FACILITY NON-DRAG-OFF
H-2-818399	SUMP LEACHATE COLLECTION PIPES RMW LAND DISPOSAL FACILITY NON-DRAG-OFF

REF NUMBER	TITLE	REV NO.	DESCRIPTION
5	REVISED PER ECR-14-001297		

Approved for Public Release;  
Further Dissemination Unlimited



BLDG. NO. 218W5	CAUTION NOT COMPLETE WITHOUT CURRENT CHANGE DOCUMENTS FROM DATABASE	ATTENTION DESTROY THIS DOCUMENT BY SHREDDING MAY CONTAIN SENSITIVE INFORMATION
OWNER BY: H0039958-RE MITCHELL	DATE: 11/1/2014	COMPANY: PRC
U.S. DEPARTMENT OF ENERGY Richland Operations Office		
SUMP PUMP INSTALLATION RMW LAND DISPOSAL FACILITY NON-DRAG-OFF (TR-34)		
INDEX NO. 0401	DRAWING NUMBER: H-2-818403	SHEET: 1 OF 5
DESIGN AUTHORITY: H0045793-J ROSSER	DATE: 11/1/2014	COMPANY: PRC
SCALE: NONE	7638	1