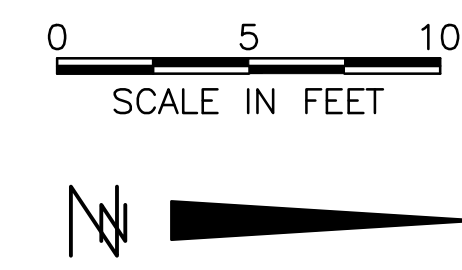


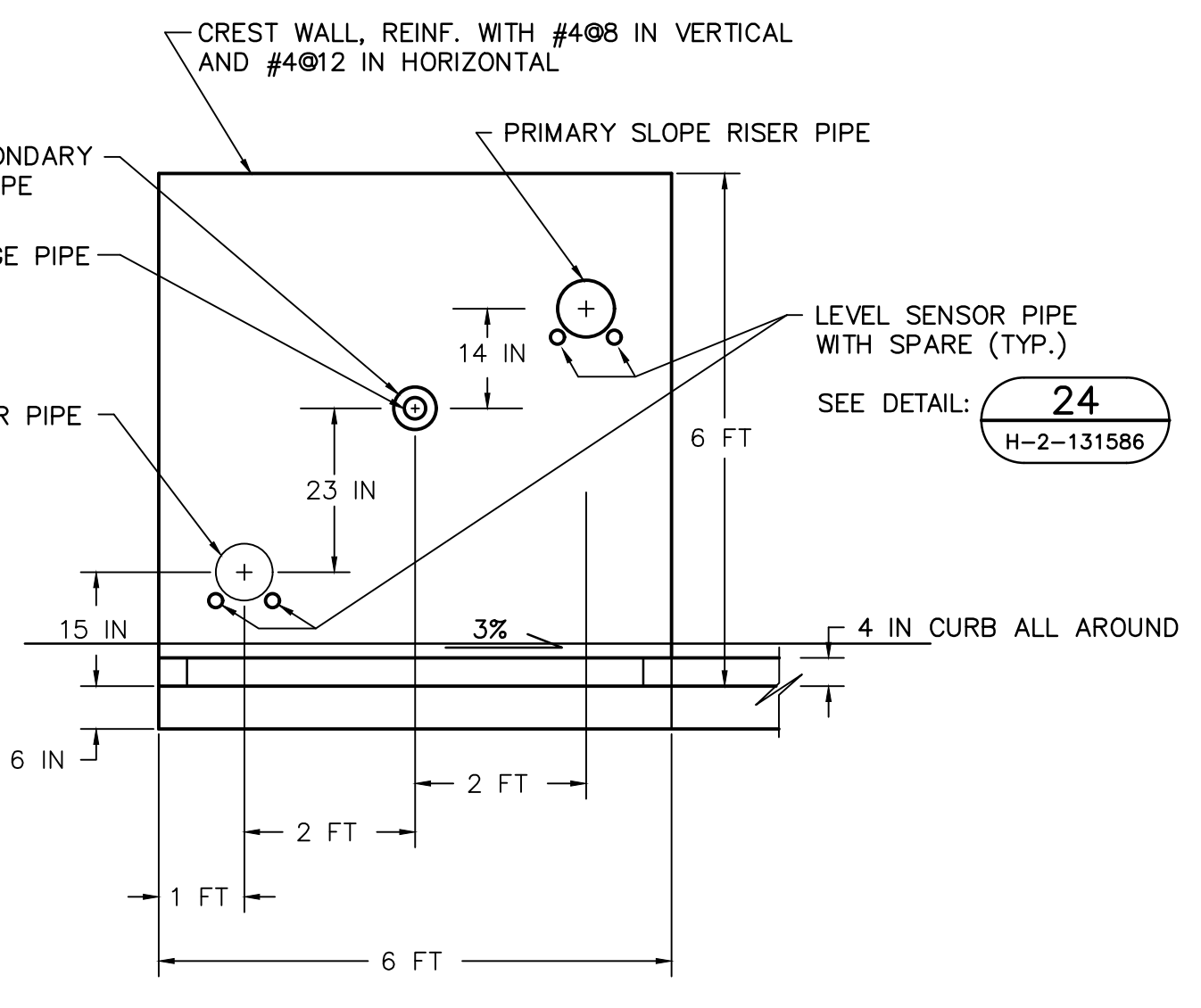
LEACHATE TEMPORARY STORAGE TANK & PIPING PLAN



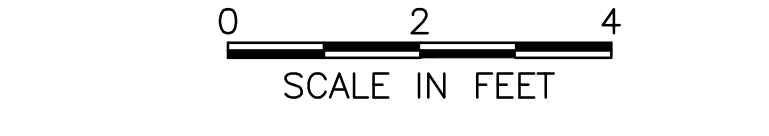
- GENERAL NOTES:**
- Tank shall be ASME Code stamped for 25 psi design pressure.
 - All welds shall be continuous and ground smooth.
 - Tank point systems shall meet the requirements of Specification Section 09900.
 - All connectors necessary for support of electrical conduits around tank shall be welded to tank prior to sandblasting and painting.
 - Welded wire fabric shall meet the requirements of Specification Section 03210.
 - Utilize bond breaker around all pipes through crest wall.
 - Weld HDPE Type III to form continuous water-tight liner on floor and sides of concrete containment areas. Details of liner around tank saddles to be provided by contractor and shown on fabrication drawings.
 - Construct steps and access walkway over HDPE liner. Do not damage liner.
 - Heat trace and insulate all exposed piping in accordance with specifications.
 - "Solenoid & Ball valve obsolete due to design change. Piping and valves still in place but not in use."
 - A hose may be added to the vent to facilitate RC sampling.

KEY:

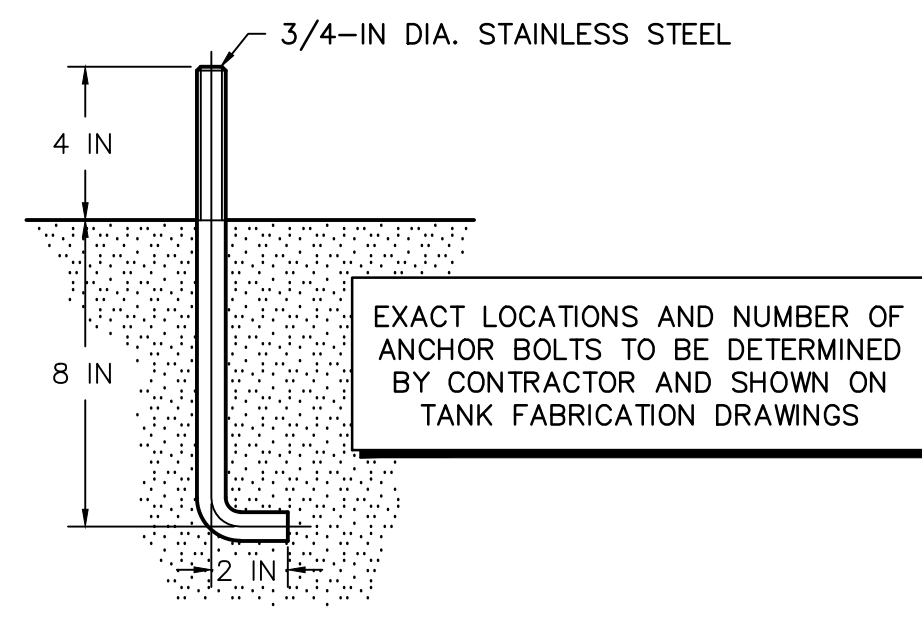
	DESIGNATION
	SHEET NUMBER
	VALVE AND PUMP IDENTIFICATION



DETAIL 18
H-2-131585

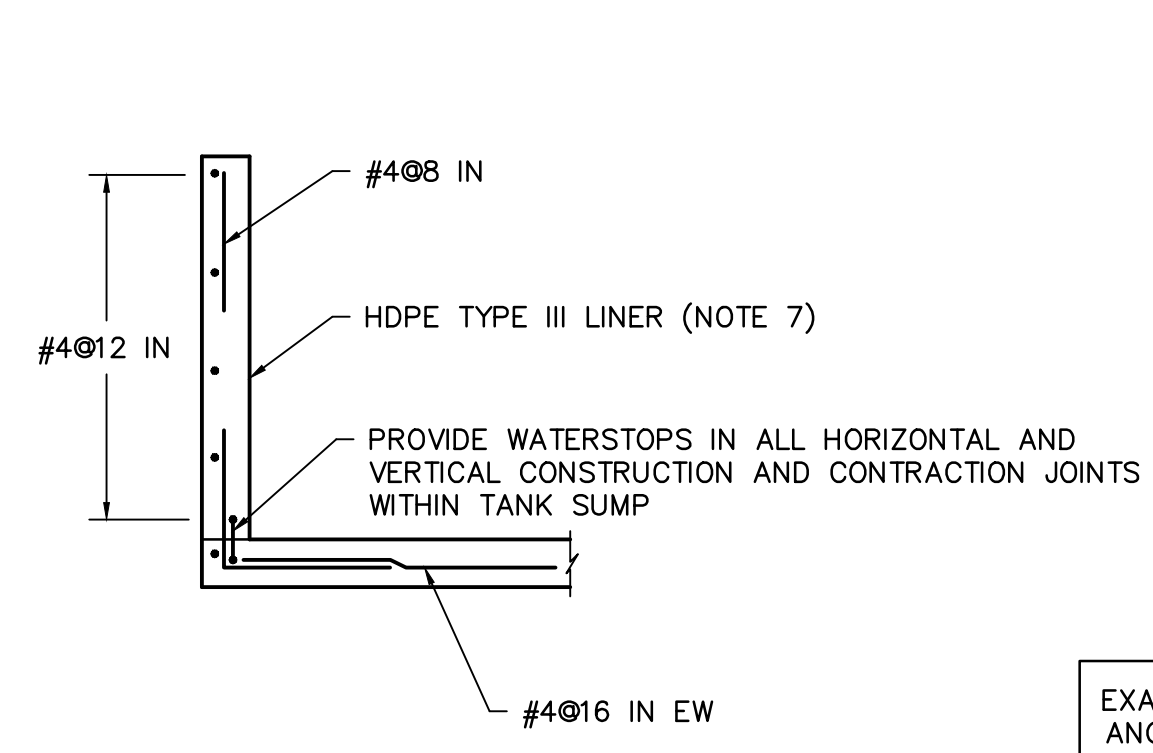


ANCHOR BOLT DETAIL

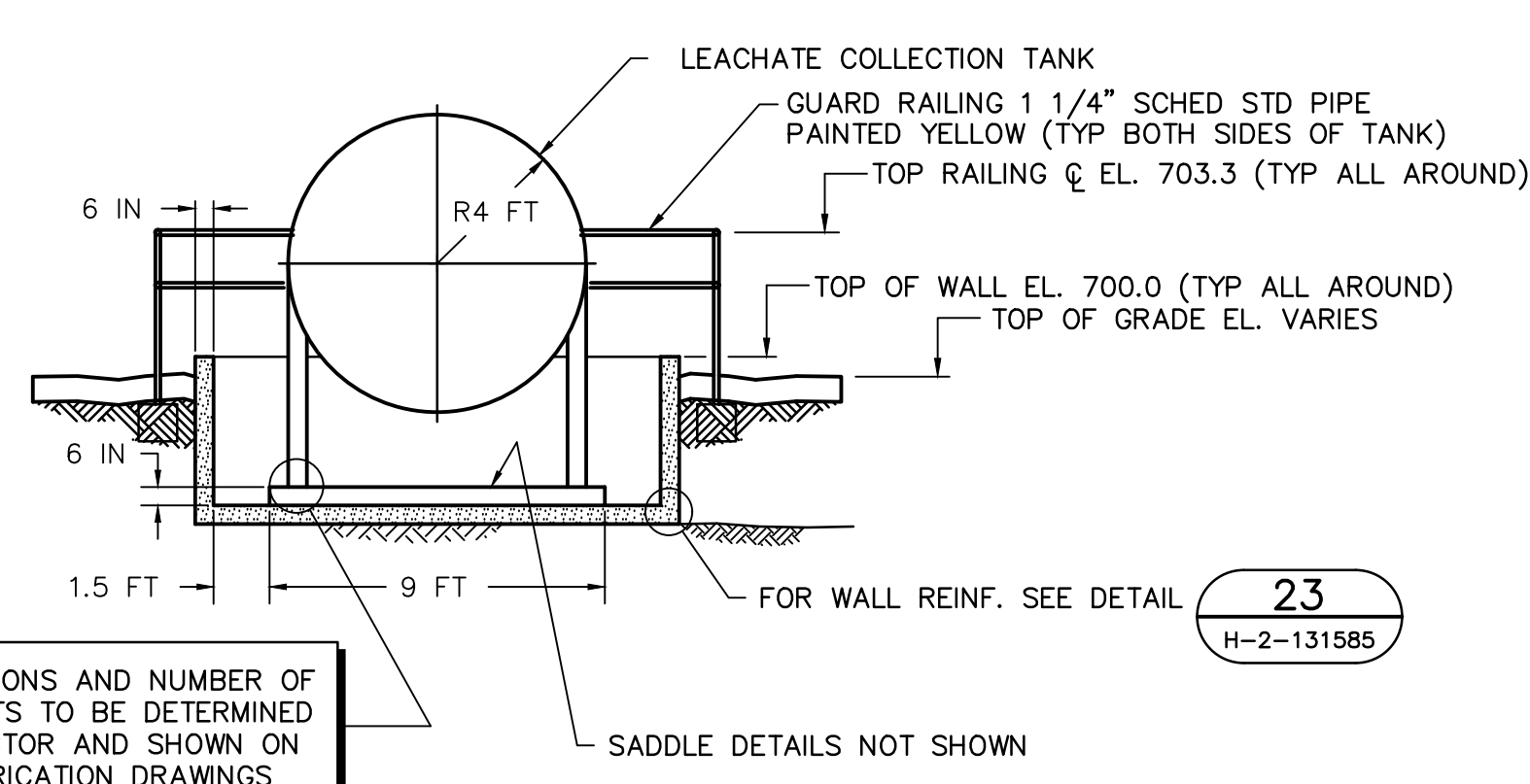


NOT TO SCALE

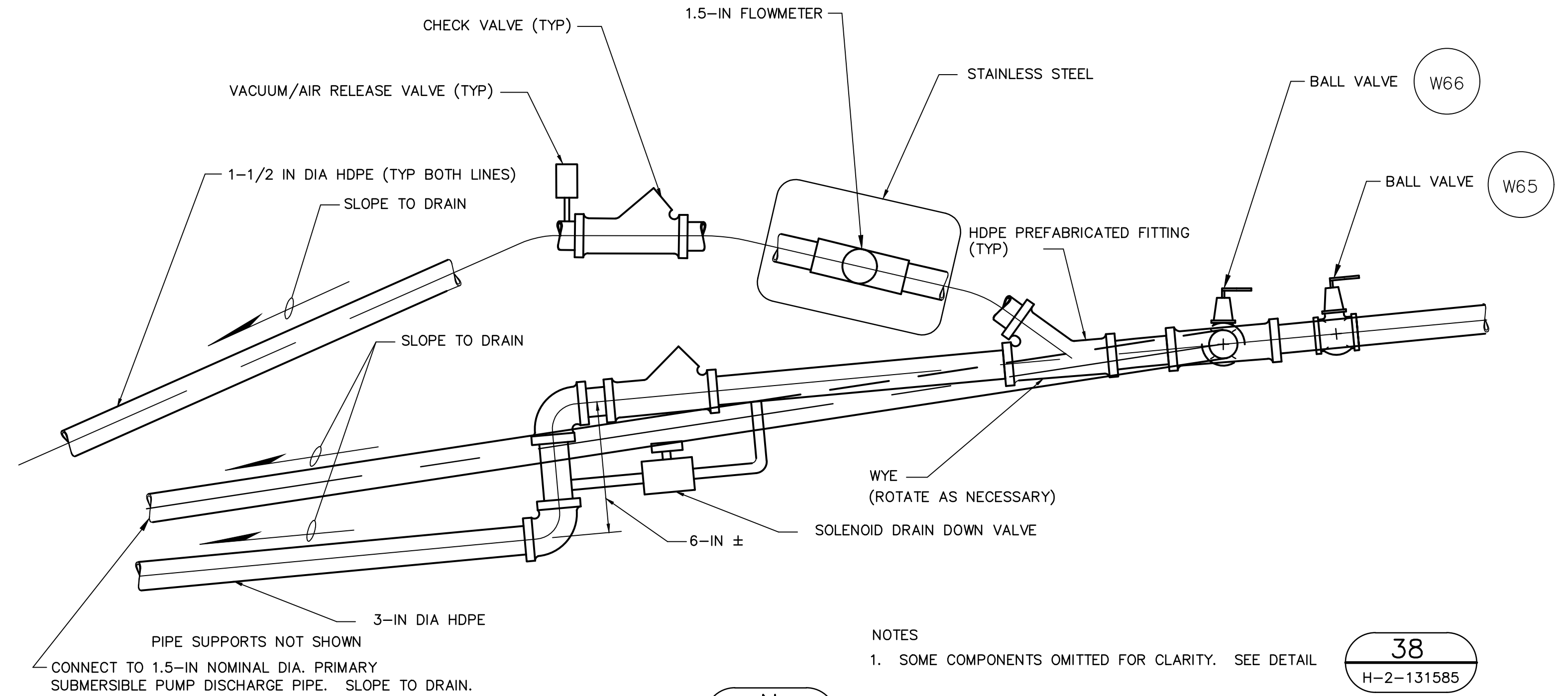
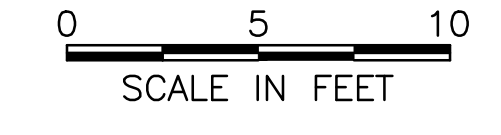
22
H-2-131585



DETAIL 23
H-2-131585



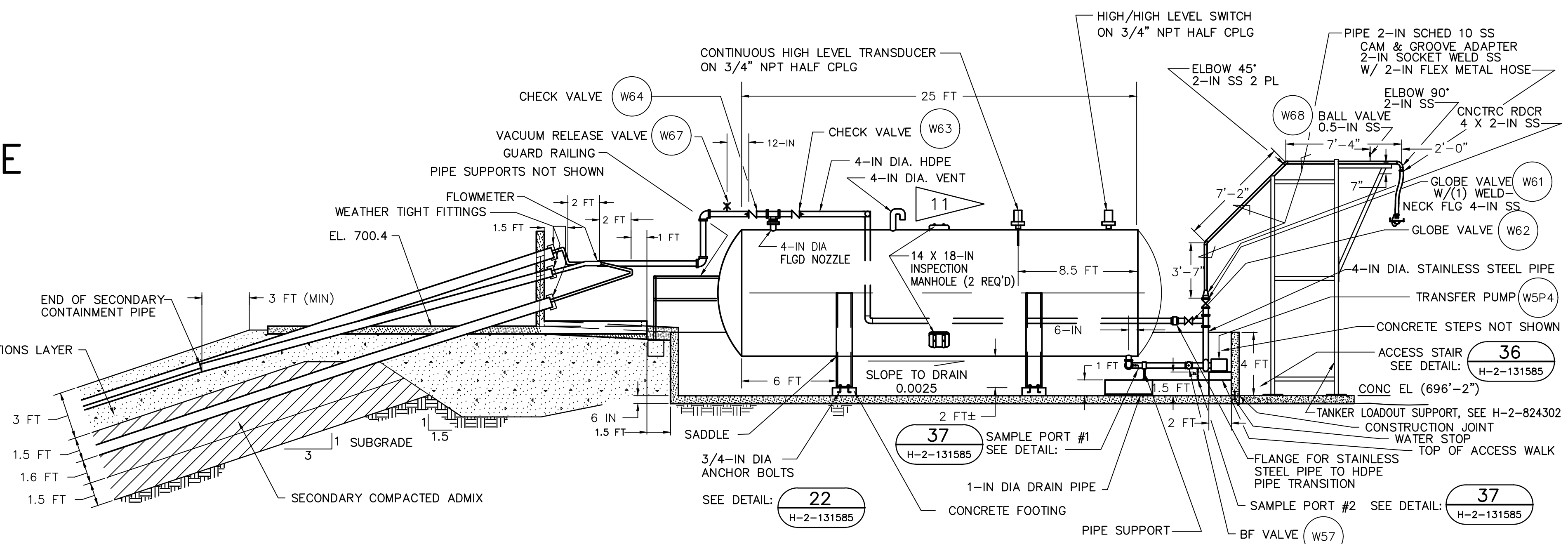
SECTION K
H-2-131585



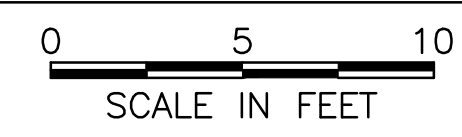
SECTION N
H-2-131585

NOT TO SCALE
SLOPE EXAGGERATED FOR CLARITY

38
H-2-131585



LEACHATE TEMPORARY STORAGE TANK & PIPING SECTION J



Approved for Public Release;
Further Dissemination Unlimited



ESSENTIAL DRAWING

BLDG. NO. 218W5	CAUTION NOT COMPLETE WITHOUT CURRENT CHANGE DOCUMENTS FROM DATABASE		ATTENTION DESTROY THIS DOCUMENT BY SHREDDING MAY CONTAIN SENSITIVE INFORMATION	
	NAME H4519458-JS POGUE DESIGN ENGINEER H0356396-AM SWENSON DESIGN ENGINEER H0356396-AM SWENSON DESIGN ENGINEER H9138552-CI LISLE	DATE 1/19/2021 1/19/2021 1/19/2021 1/19/2021	COMPANY PRC PRC PRC PRC	U.S. DEPARTMENT OF ENERGY Richland Operations Office
INDEX NO. 0401	13 REVISED PER ECR-19-001363		LEACHATE COLLECTION TANK & PIPING RMW LAND DISPOSAL FACILITY NON-DRAG-OFF (TR-31)	
DWG NUMBER H-2-824303		TITLE W025, TRENCH 31 TANKER LOADOUT FACILITY INSTALL		DRAWING NUMBER H-2-131585
NEXT USED ON		END ITEM		SHEET 1
DRAWING TRACEABILITY LIST		REFERENCES		REV 13
REV. NO.		DESCRIPTION		SCALE SHOWN
REV. REL.		REVISIONS		12100